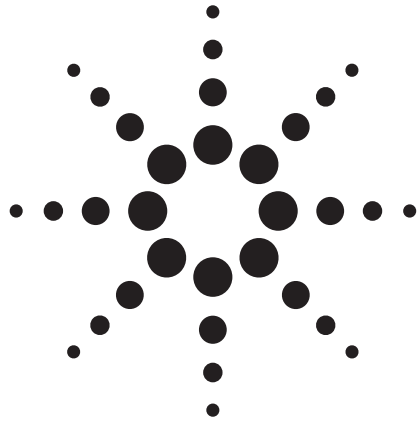


SignalWizard: all-channel testing technology (SDH)

Product note



The role of SDH technology is evolving. Network elements are now incorporating grooming capability coupled with switching and multiplexing. Increasingly deployed in the access network, they enable bandwidth in the core network to be used efficiently. To ensure these network elements are fully and effectively tested, new test techniques are required if installation, commissioning and troubleshooting are to be cost-effective propositions.

To fully check routing of transmission paths in multi-service aggregation platforms each channel must be tested sequentially. This is time consuming and inefficient. An obvious solution to increase productivity would be to simultaneously monitor all the channels in a single test, without compromising measurement accuracy.

Agilent's new family of portable Transmission Test Set offers the very latest in all-channel testing technology. It provides simultaneous monitoring of up to 192 channels continuously at 10 Gb/s, with granularity down to the AU-3/AU-4 level. This product note explains how this technology can be applied to reduce network operational costs and improve network quality of service.



Agilent Technologies

Introduction

To cope with the growth in traffic volume and diversity of traffic types in today's networks, transmission systems are evolving. The latest network elements aggregate any voice, data and video services and efficiently concentrate them for optimal use of bandwidth in the long-haul transmission network.

These network elements bring all the functionality of multiple multiplexers, optical networking and switching together into a single platform, and typically support a variety of interfaces and bandwidths to AU-3/AU-4 grooming granularity. Of course, as the volume and diversity of traffic expands, quick provisioning, fast commissioning and the need for service differentiation must be considered if the demands of customers are to be satisfied.

Agilent's new generation of field-portable SDH/SONET Transmission Test Sets provide a test platform that allows continuous monitoring of up to 192 channels (all AUs) at the same time. They allow you to automatically identify the line rate and channel structure of a received SDH signal, then

monitor all channels for errors, alarms and pointer movements. In addition, they identify the traffic carrying status of each channel, including the type of service signal being transported. This level of precision is necessary if network elements such as new-generation aggregation platforms, add-drop multiplexers and digital cross-connects are to be both efficiently and rigorously tested.

Simultaneous monitoring can be performed both in-service and out-of-service at all SDH rates from 52 Mb/s up to 10 Gb/s. This capability is provided by the instrument's SignalWizard facility. Once enabled, SignalWizard automatically:

- discovers the line rate and channel structures of any valid STM-n signal. This includes STM-n signals that contain any mix of standard and concatenated channels.

- simultaneously monitors the line signal and all AU channels (up to 192) for errors, alarms and pointer activity.
- shows which channels are unequipped and the type of service signal being carried by equipped channels.
- provides listing and search tools to identify path routing errors within the network, and searches on any sub-string contained within the target path trace message.

From a test perspective, this technology can be used for in-service and out-of-service monitoring for faster problem resolution and improved quality-of-service.

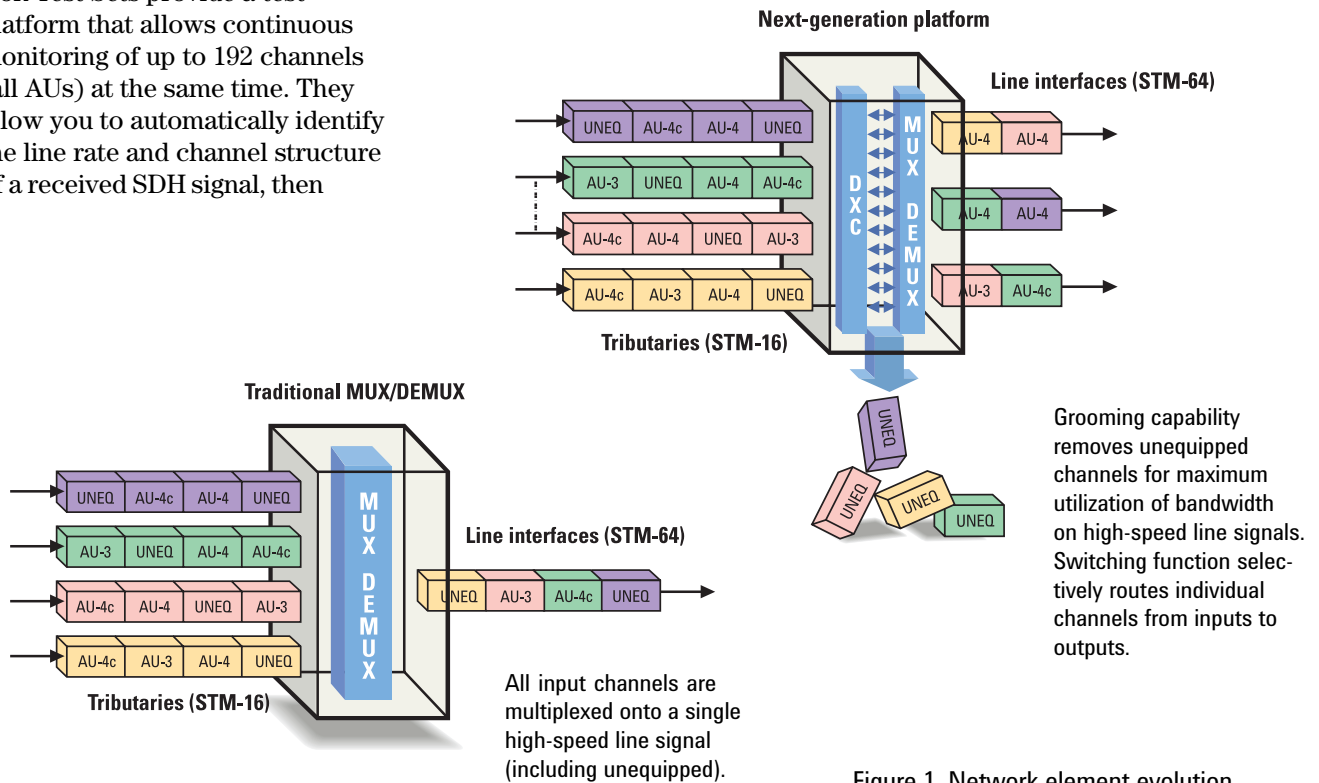


Figure 1. Network element evolution

In-service monitoring

In-service monitoring of live SDH signals is typically performed during the troubleshooting of transmission problems, commissioning (configuring) of new SDH transmission systems and service paths, and routine maintenance checks. The ability to automatically identify, then simultaneously monitor, all channels within the source signal helps rapidly verify network performance. This ensures more problems are found quickly and easily, and reduces the number of fault escalation procedures being activated. The simple operation of SignalWizard ensures that network staff can also find problems fast and readily without setting up complex testing procedures.

The transmission tester has the ability to view the full structure of the signals at both the input and output ports of an aggregation platform. This means that it is not necessary to have full cross-connection details of the aggregation platform before performing a test procedure.

For example, when commissioning a new network element, SignalWizard can be used to quickly determine whether all the paths through the network element are configured correctly and operating error-free.

In addition, if a customer has degraded performance on their service, SignalWizard will show the operator instantly whether errors are occurring only in that customer's channel, or across additional channels.

A typical connection diagram when performing in-service monitoring is shown in Figure 2.

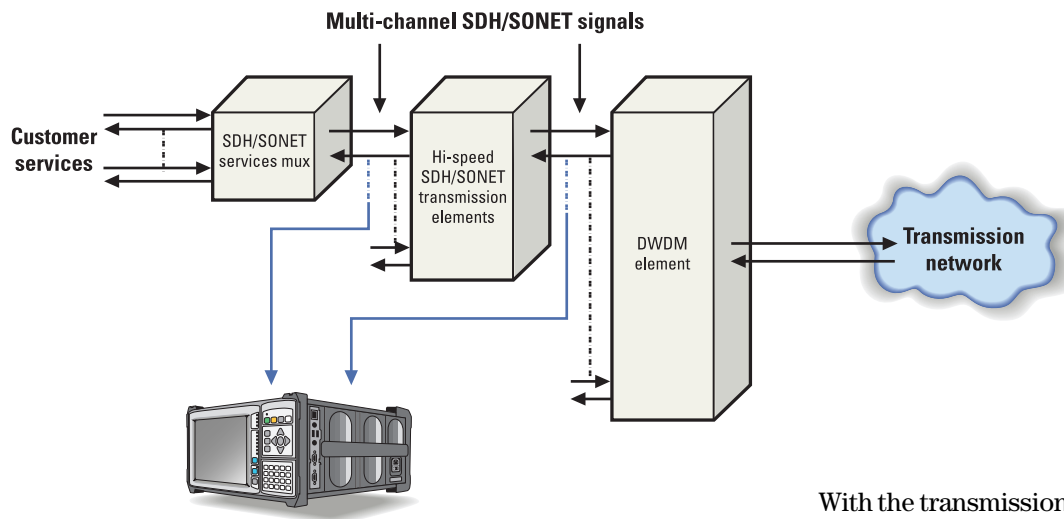


Figure 2. Typical in-service test connections

With the transmission test set connected to the network monitor point, the test set's receiver automatically synchronizes to the network clock.

Just two key presses on the test sets are required to access the all-channel monitoring function. Once the STM-n signal of interest is connected to the appropriate receiver port on the test set, press the 'Smart Test' button on the front panel of the instrument.

SignalWizard is now initiated and scans all the input ports to determine those receiving signals. (If more than one signal is detected, these will be displayed together with their associated line rates.)

The instrument displays the signal overview page allowing you to monitor the signal of interest, including error and alarm status, in its entirety.

In figure 3, it is evident that some of the AU channel mappings contain a sub-TU signal structure. By highlighting the signal of interest and pressing the 'Select' button, in-depth analysis can take place as shown in figure 4.

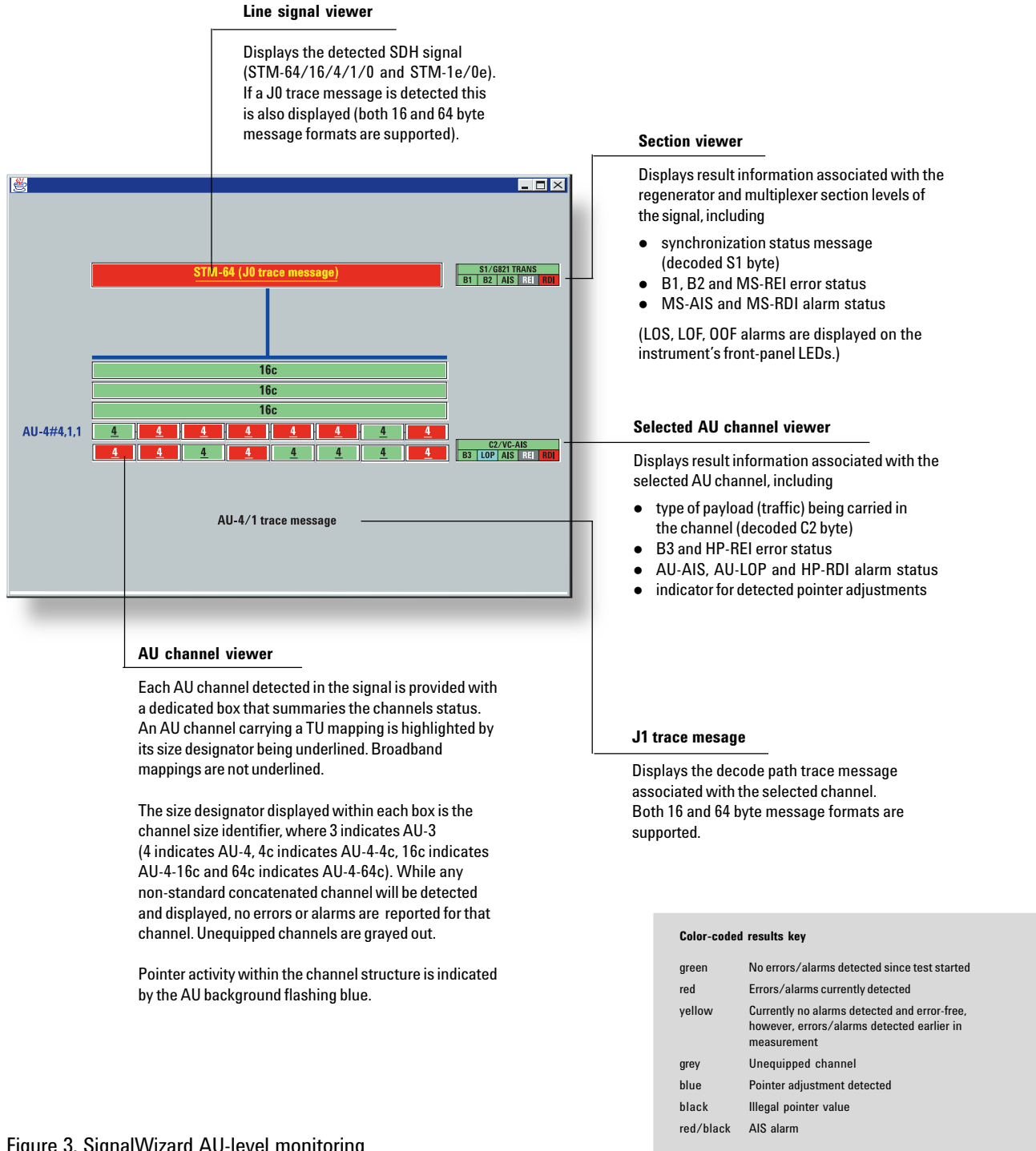
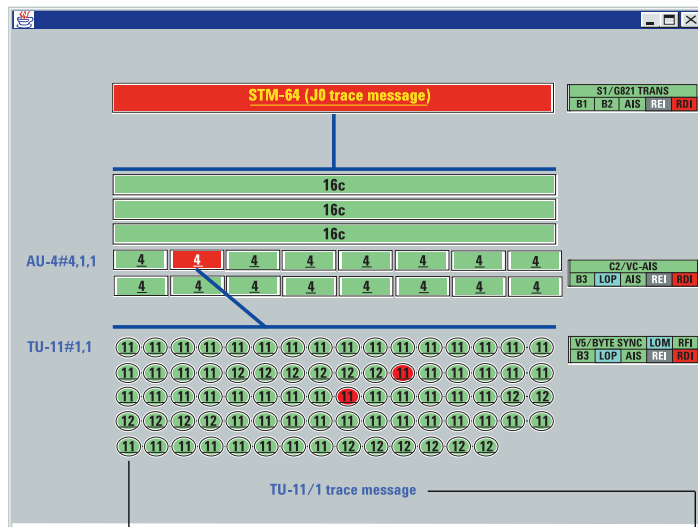


Figure 3. SignalWizard AU-level monitoring

Figure 4. SignalWizard AU and TU monitoring



Selected TU channel viewer

Displays result information associated with the selected TU channel, including

- type of service mapping being carried in the channel (decoded V5 byte)
- BIP-2 and LP-REI error status
- TU-AIS, TU-LOP, TU-LOM, LP-RFI and LP-RDI alarm status
- indicator for detected pointer adjustments

TU channel viewer

Each TU channel detected is provided with a dedicated display area identifying traffic status. The TU channel's size designator identifies the tributary rate, where 11 indicates TU-11 and 12 indicates TU-12. Channels underlined indicate the channel is carrying a mapped service. Unequipped channels are grayed out.

Pointer activity within the channel structure is indicated by the TU background flashing blue.

J2 trace message

Is displayed for the selected VT channel. Both 16 and 64 byte message formats are supported.

Path routing and traffic overview

When installing and commissioning new services, or troubleshooting, the ability to generate and monitor path trace messages is essential. These messages allow you to confirm correct routing performance of the aggregation elements, and allow you to identify and locate any routing errors within the network. Path trace messages are also useful for checking routing performance of network elements during protection switching to confirm the correct signals have been protected in fault conditions.

The path trace and traffic overview facilities are available for both the AU and the TU signal structures. All the J1 path trace messages can be displayed at the same time.

In addition, J2 path trace messages associated with each TU channel for a selected AU can be viewed at the same time. This allows you to continually monitor and easily identify path routing errors within the network.

It is also possible to perform a search on any sub-string contained within a target path trace message. This includes all J1 path trace messages in the AU channels, all J2 path trace messages in the TU channels within a selected AU, or all TU channels in all AU channels.

Channel	Size	Trace Message	Signal Label
1,1,1	AU-4-16c	London - Paris #2	HDLC/PPP
2,1,1	AU-4-16c	London - Berlin #4	LC/PPP
3,1,1	AU-4-4c	London - Manchester #2	HDLC/PPP
4,1,1	AU-4	London - Ipswich #26	ATM
4,2,1	AU-4	London - Rome #25	140Mb/s
4,2,2	AU-4	London - Oslo #8	TUG
4,2,3	AU-4	London - Dublin #26	TUG
4,2,3	AU-4	London - Edinburgh #3	140Mb/s
4,2,4	AU-4	London - Barcelona #30	140Mb/s
4,3,1	AU-4	London - Liverpool #10	TUG
4,3,2	AU-4	London - Budapest #19	140Mb/s
4,3,3	AU-4	London - Newcastle #18	TUG
4,3,4	AUG-4	London - Kilmarnock #21	TUG
4,4,1	AU-4-4c	London - Cardiff #7	TUG

London - Rome #25

Figure 5. Path trace overview

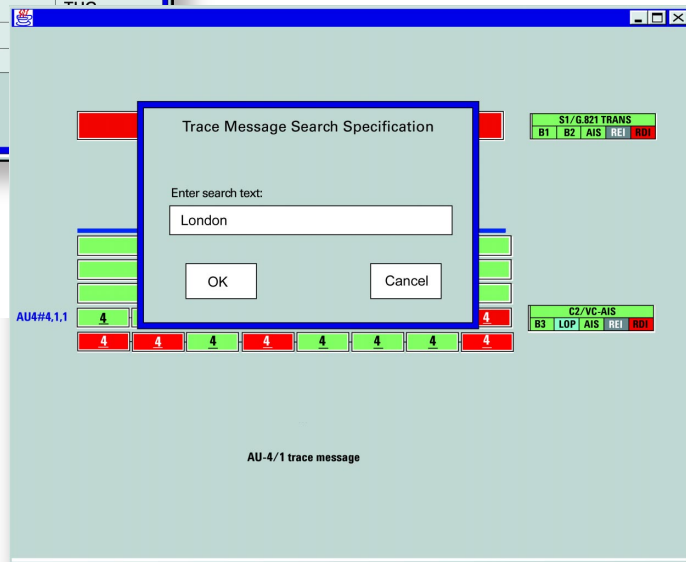


Figure 6. Path trace search window

Out-of-service testing

When used in conjunction with the test set's versatile transmitter, SignalWizard's unique all-channel monitoring capability delivers significant reductions in test time when installing, commissioning and troubleshooting the new generation of SDH transmission systems. Since these new transmission systems typically provide AU channel grooming and switching functions in addition to multiplexing, full verification of their operation is only possible by performing tests on each individual AU path processed by the

system. With traditional SDH test sets, this can only be achieved by sequentially testing each AU path carried within the STM-n tributary or line signals. For example, testing an STM-16 tributary signal containing sixteen AU-4s would require sixteen individual tests. SignalWizard requires just two key presses to test all sixteen AU-4s allowing a faster method of independently verifying the channel provisioning setup in the system-under-test (see figure 7).

Additionally, SignalWizard identifies:

- the type of network paths present in the signal output by the network element, including the mix of AU-3, AU-4, AU-4-4c, AU-4-16c, AU-4-64c channels.
- the traffic-carrying status of each AU channel, showing which channels are equipped.

This also applies at the TU channel level in any selected AU channel.

Generating a test signal with the ability to simultaneously monitor all of the channels within the signal quickly determines the integrity of the network element-under-test without setting up complex testing procedures. The signal can be applied to both the tributary side or the line side of the network element. The attractive proposition of stimulating the element from the line side (see

figure 8) is the reduction in the amount of test ports that need to be tested to completely check operational conformance of the network element. (It should be noted that this is only possible if the line-side signal has no forward error correction (FEC), or if this is turned off during testing.) For example, when commissioning and acceptance testing a new network element, SignalWizard

can be used to quickly determine whether all the paths through the network element are configured correctly, and operating error-free.

The simultaneous all-channel monitoring technology of SignalWizard means that these tasks can be accomplished fast, effortlessly and comprehensively, improving quality of service to all your customers.

Figure 7. Tributary-side testing a next-generation platform

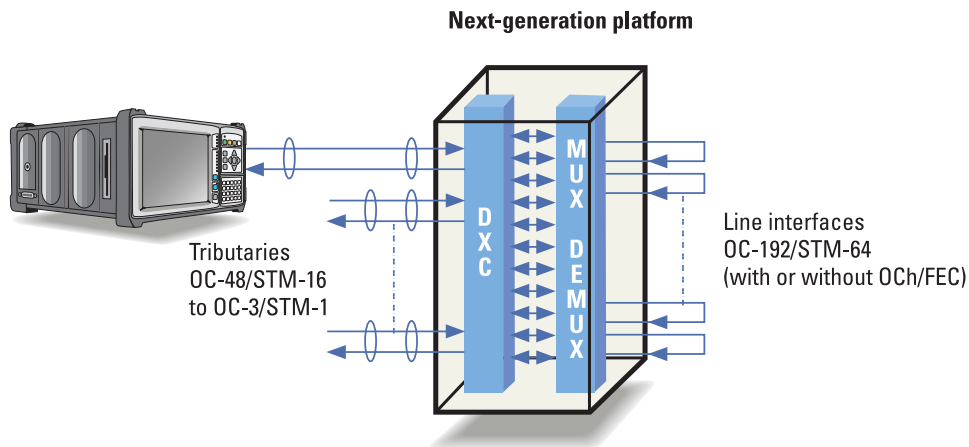
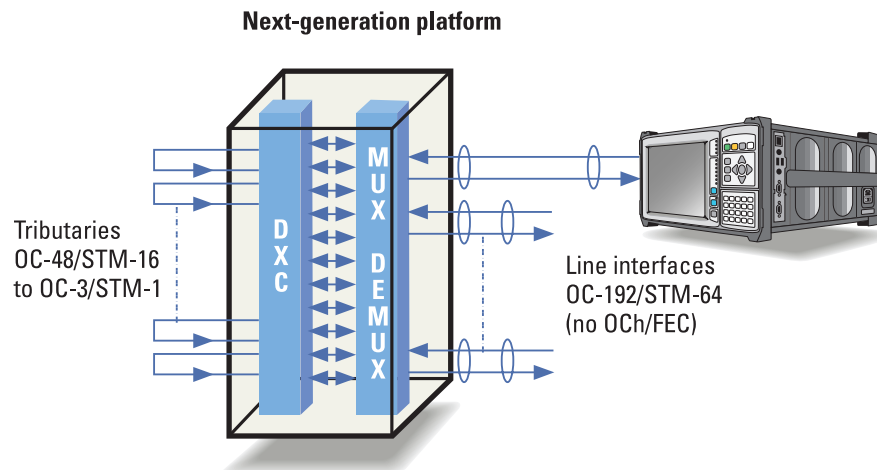


Figure 8. Line-side testing a next-generation platform



Agilent Technologies' Test and Measurement Support, Services, and Assistance

Agilent Technologies aims to maximize the value you receive, while minimizing your risk and problems. We strive to ensure that you get the test and measurement capabilities you paid for and obtain the support you need. Our extensive support resources and services can help you choose the right Agilent products for your applications and apply them successfully. Every instrument and system we sell has a global warranty. Support is available for at least five years beyond the production life of the product. Two concepts underlie Agilent's overall support policy: "Our Promise" and "Your Advantage."

Our Promise

Our Promise means your Agilent test and measurement equipment will meet its advertised performance and functionality. When you are choosing new equipment, we will help you with product information, including realistic performance specifications and practical recommendations from experienced test engineers. When you use Agilent equipment, we can verify that it works properly, help with product operation, and provide basic measurement assistance for the use of specified capabilities, at no extra cost upon request. Many self-help tools are available.

Your Advantage

Your Advantage means that Agilent offers a wide range of additional expert test and measurement services, which you can purchase according to your unique technical and business needs. Solve problems efficiently and gain a competitive edge by contracting with us for calibration, extra-cost upgrades, out-of-warranty repairs, and on-site education and training, as well as design, system integration, project management, and other professional engineering services. Experienced Agilent engineers and technicians worldwide can help you maximize your productivity, optimize the return on investment of your Agilent instruments and systems, and obtain dependable measurement accuracy for the life of those products.

By internet, phone, or fax, get assistance with all your test & measurement needs

Online assistance:
www.agilent.com/find/assist

Phone or Fax

United States:
(tel) 1 800 452 4844

Canada:
(tel) 1 877 894 4414
(fax) (905) 206 4120

Europe:
(tel) (31 20) 547 2323
(fax) (31 20) 547 2390

Japan:
(tel) (81) 426 56 7832
(fax) (81) 426 56 7840

Latin America:
(tel) (305) 267 4245
(fax) (305) 267 4286

Australia:
(tel) 1 800 629 485
(fax) (61 3) 9272 0749

New Zealand:
(tel) 0 800 738 378
(fax) 64 4 495 8950

Asia Pacific:
(tel) (852) 3197 7777
(fax) (852) 2506 9284

Product specifications and descriptions in this document subject to change without notice.

© Agilent Technologies, Inc. 2001
Printed in UK, 9 August 2001
5988-2762EN



J2126A and J2127A
transmission test sets are
Class 1 laser products
EN60825-1: 1994
Class I laser product
21 CFR Chapter 1 1040.2 Class 1

Agilent Technologies manufactures the J2126A and J2127A transmission test sets under a quality system approved to the international standard ISO 9001 plus TickIT (BSI Registration certificate No FM 10987).



Agilent Technologies