

Using the Agilent 89600 VSA Software with the Demo CD

White Paper

The demo CD is exactly the same as the product CD – only the license is different. Use either the demonstration license or the trial license to learn more about the 89600 VSA software.

Table of Contents

Using the Demonstration

License Mode 2

Installing the software using the demo CD 2

Using the software 3

Using the Trial License Mode 4

Installing the software using the demo CD 4

Running the software 5

Support, Services, and Assistance ... 6

Using the Demonstration License Mode

The easiest way to learn about digital modulation and typical measurements is to install the 89600 VSA software in a “software only” mode and use the non-expiring demo license for access to the software plus the built-in tutorials, the sample recorded signals, and the extensive help text. Here’s how:

Installing the software using the demo CD

- Insert the CD in your computer’s CDRom drive. After a few seconds the autoplay function will bring up an installer screen. If auto-run is disabled on your computer, simply execute the file AUTOPLAY.EXE in the root directory of the CD.
 - When the Installation manager screen appears, select **Install Agilent 89600 VSA** and follow instructions.
 - Choose **software-only installation**. It is recommended that you perform a “software only” installation since you will not need the hardware drivers (I/O libraries) to explore the software and try out measurements on recorded signals. If you later want to try out the full software functionality with connections to hardware via the 14-day limited-time license, you can reinstall the software with the I/O libraries at that time.
 - Unless you have another preference, choose the default installation directories.
- After installation, you can run the software by clicking the Vector Signal Analyzer icon



it places on your desktop or you can click **Start > All Programs > Agilent 89600 VSA > Vector Signal Analyzer**. By default, the installation will also place a Spectrum Analyzer icon on your desktop. This is for scalar spectrum analysis only and does not apply to the time capture files you will be analyzing using the demonstration license.

- Each time you start the program, it will note that you do not have a permanent license and the “Invalid authorization message” below will appear. When you click **Yes**, it will ask you if you want to acquire a “demo” license. This is the option you should normally use. The demo license capability never expires, and it gives you full ability to analyze any of the dozens of supplied signal recordings with the full 89600 VSA software.

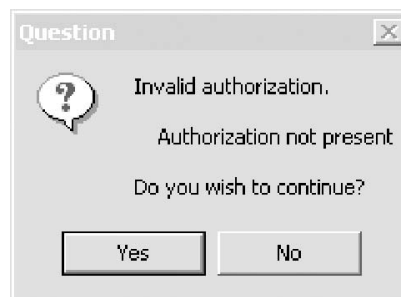


Figure 1. Invalid authorization message

Using the Demonstration License Mode

Using the software

- The demo license only works with the supplied recorded signals (time capture recordings all identifiable as *.SDF files) that come with the software. These signals are in the following directory:
\Program Files\Agilent\89600 VSA\Help\Signals\.
- The first time you run the help facility it will compile an index of the help topics. The first search you perform while in the help facility may fail with an error. Simply close the help facility and try again. The error should go away.
- Recall one of the signal recordings and experiment with spectrum, time, or digital modulation measurements.
- Use the tutorial in the help text and associated signal recordings to perform digital modulation analysis on various impaired signals.
- Explore the help text for explanations of any topic of interest.
- View the supplied measurement videos on your PC.
- You may copy or distribute the software and install/uninstall it as you wish. There is never any fee or obligation for the demonstration license. The demonstration license allows you to use the software freely with any of the supplied signal recordings.
- The disk also contains a number of videos (*.AVI files that you can view on your computer) describing the analyzer software in general, and specific OFDM troubleshooting, focused on 802.11a, in particular. You can view these videos from the installer screen or by navigating to them on the CD with Windows Explorer.

Using the Trial License Mode

A “trial” license is also available and it provides full functionality including connection to acquisition hardware and other software (importing files from MATLAB®, etc.). This license can be invoked only once and expires after two weeks. After the trial license expires the demo license will still be available.

To access the trial license mode, you must first install the software using one of two methods: demo CD or download from web.

Installing the software using the demo CD

- Insert the CD in your computer’s CDRom drive. After a few seconds the autoplay function will bring up an installer screen. If auto-run is disabled on your computer, simply execute the file AUTOPLAY.EXE in the root directory of the CD.
- When the Installation manager screen appears, select **Install Agilent 89600 VSA** and follow instructions.
- Choose **full hardware installation (supports hardware with external PC)**. This will load the hardware drivers (I/O libraries) needed. Note that if you are already using your PC to control instruments using Agilent IO drivers, it is possible to get error messages regarding them. If this occurs, we recommend reading the installation manual, available on the CD or as part of the help text. Here are the typical error messages and simple means to deal with them.
 - “**The resident Agilent IO libraries are the same as the bundled version, and will not be reinstalled.**” The IO libraries currently installed on your computer are the same version as those on the 89600 installation CD. You can force a reinstall, but it is not necessary.
 - “**The resident Agilent IO libraries are older than the bundled version. Would you like to update them (recommended)?**” The IO libraries currently installed on your computer are an older version than those on the 89600 installation CD. Click **Yes** if you want to update the IO libraries. If you click **No**, the 89600 software is not guaranteed to operate on your computer.
 - “**The resident Agilent IO libraries are newer than the bundled version, and will not be reinstalled.**” If you want to install the IO libraries from the 89600 installation CD, you must remove the currently-installed libraries before proceeding.
- Unless you have another preference, choose the default installation directories.
- After installation you can run the software by clicking the Vector Signal Analyzer icon



it places on your desktop or click **Start > All Programs > Agilent 89600 VSA > Vector Signal Analyzer**. By default, the installation will also place a Spectrum Analyzer icon on your desktop. This is for scalar spectrum analysis only and does not apply to the time capture files you will be analyzing using the demonstration license.

Using the Trial License Mode

- The first time you start the program, the authorization screen shown below will appear (Figure 2). Select the **Trial License** tab and click **Yes** when asked if you want to acquire a “trial” license.
- Note that you will have two weeks from the time of acceptance to use all the features. To determine how much time you have left, click **Utilities > License > Status** and the time remaining will show on the **Status** tab.
- After the two weeks, you will get the Invalid Authorization screen, below (Figure 3). The trial license is no longer available to you, but you can choose to run the demo license mode.

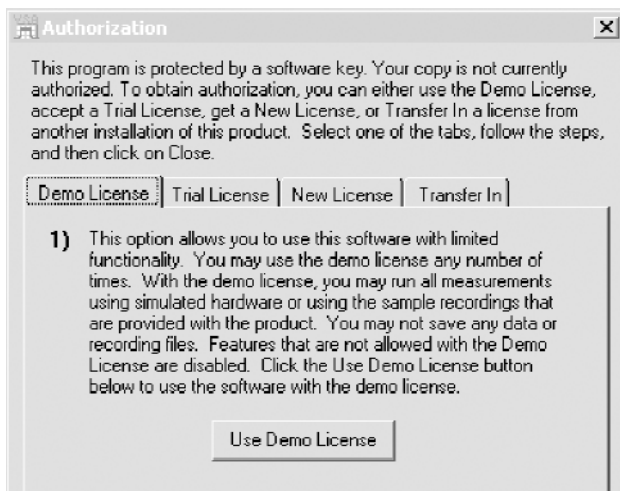


Figure 2. Authorization message

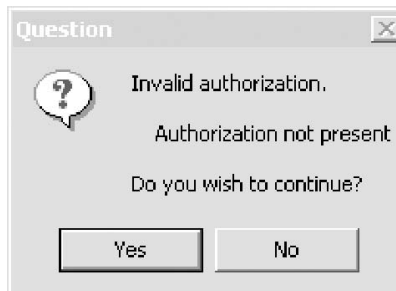


Figure 3. Invalid Authorization screen

Running the software

- The first time you run the help facility, it will compile an index of the help topics and the first search you perform while in the help facility may fail with an error. Close the help facility and try again; the error should go away.
- Recall one of the signal recordings and experiment with spectrum, time, or digital modulation measurements.
- Use the tutorial in the help text and associated signal recordings to perform digital modulation analysis on various impaired signals.
- Explore the help text for explanations of any topic of interest.
- View the supplied measurement videos on your PC.
- You may copy or distribute the software and install/uninstall it as you wish. There is never any fee or obligation for the demonstration license. The demonstration license allows you to use the software freely with any of the supplied signal recordings.

Agilent Technologies' Test and Measurement Support, Services, and Assistance

Agilent Technologies aims to maximize the value you receive, while minimizing your risk and problems. We strive to ensure that you get the test and measurement capabilities you paid for and obtain the support you need. Our extensive support resources and services can help you choose the right Agilent products for your applications and apply them successfully. Every instrument and system we sell has a global warranty. Two concepts underlie Agilent's overall support policy: "Our Promise" and "Your Advantage."

Our Promise

Our Promise means your Agilent test and measurement equipment will meet its advertised performance and functionality. When you are choosing new equipment, we will help you with product information, including realistic performance specifications and practical recommendations from experienced test engineers. When you receive your new Agilent equipment, we can help verify that it works properly and help with initial product operation.

Your Advantage

Your Advantage means that Agilent offers a wide range of additional expert test and measurement services, which you can purchase according to your unique technical and business needs. Solve problems efficiently and gain a competitive edge by contracting with us for calibration, extra-cost upgrades, out-of-warranty repairs, and on-site education and training, as well as design, system integration, project management, and other professional engineering services. Experienced Agilent engineers and technicians worldwide can help you maximize your productivity, optimize the return on investment of your Agilent instruments and systems, and obtain dependable measurement accuracy for the life of those products.

Agilent Open

www.agilent.com/find/open

Agilent Open simplifies the process of connecting and programming test systems to help engineers design, validate and manufacture electronic products. Agilent offers open connectivity for a broad range of system-ready instruments, open industry software, PC-standard I/O and global support, which are combined to more easily integrate test system development.

Agilent Email Updates

www.agilent.com/find/emailupdates

Get the latest information on the products and applications you select.

Agilent Direct

www.agilent.com/find/agilentdirect

Quickly choose and use your test equipment solutions with confidence.

For more information on Agilent Technologies' products, applications or services, please contact your local Agilent office. The complete list is available at:

www.agilent.com/find/contactus

Phone or Fax

United States:

(tel) 800 829 4444
(fax) 800 829 4433

Canada:

(tel) 877 894 4414
(fax) 800 746 4866

China:

(tel) 800 810 0189
(fax) 800 820 2816

Europe:

(tel) 31 20 547 2111

Japan:

(tel) (81) 426 56 7832
(fax) (81) 426 56 7840

Korea:

(tel) (080) 769 0800
(fax) (080) 769 0900

Latin America:

(tel) (305) 269 7500

Taiwan:

(tel) 0800 047 866
(fax) 0800 286 331

Other Asia Pacific Countries:

(tel) (65) 6375 8100
(fax) (65) 6755 0042

Email: tm_ap@agilent.com

Contacts revised: 05/27/05

Product specifications and descriptions in this document subject to change without notice.

© Agilent Technologies, Inc. 2006

Printed in USA, June 2, 2006

5989-5251EN