

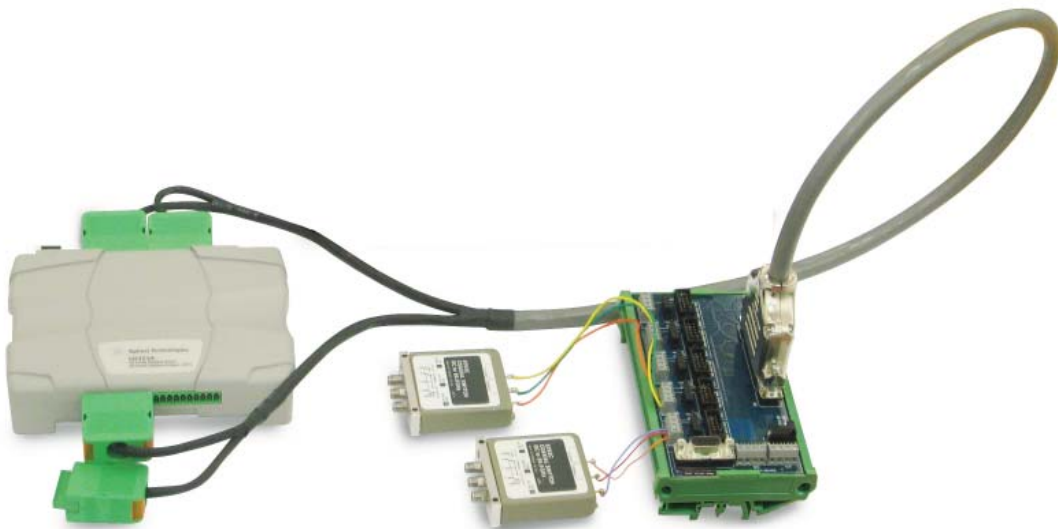


Agilent

Creating a Small, Low-cost RF Switching System

Digital I/O module provides a cost-effective alternative for small test systems

Application Note



Agilent Technologies

Introduction

In RF test systems, switching is used for a wide variety of signal-routing applications. Four types of switching are commonly used to accelerate automated testing:

- Routing multiple signal sources to one output
- Routing multiple input signals to one measurement instrument
- Inserting and removing a device in a signal path
- Providing matrix switching of multiple inputs and outputs

One common application is lifetime testing of mobile phones. This requires the application of continuous electrical stress while measuring a mobile phone's electrical characteristics.

Versatile RF switching also enables the following flexible test configurations shown in Figure 1.

- Use a single instrument to measure multiple devices under test (DUTs)
- Use multiple instruments connected to different test points on the same DUT
- Use multiple instruments to test multiple DUTs

When designing an RF test system, the application itself helps determine the tradeoffs between cost and performance in the RF switch components: the switch modules and accompanying connectors and cables. In a typical complex test system, the many connectors and cables can cause the RF switch system to become a huge and messy subsystem. For small and simple test systems, the Agilent RF switch driver solution ensures a neat and clean configuration.

The Agilent U2121A is a USB-based digital I/O module that provides a cost-effective alternative for switch control in small test systems. When coupled with the optional RF switch driver, the USB-based digital I/O module can control and monitor up to five RF switches, including some of Agilent's most popular RF/microwave switches, listed below:

- N181x series SPDT switches^[1]
- 8762/3/4 series SPDT switches (screw terminal)^[1]
- 8765x coaxial switches^[1]

The Agilent U2121A-based solution can also control any other switch that matches its electrical specifications.

To meet a variety of needs, each channel accommodates three types of switch terminals: flat ribbon cable connector, DIP solder terminal strip, and discrete wire socket. On any individual channel, just one terminal type can be used at a time. However, different types can be used across the five channels.

[1] Supports 24 VDC voltage supply, 120 mA current only.

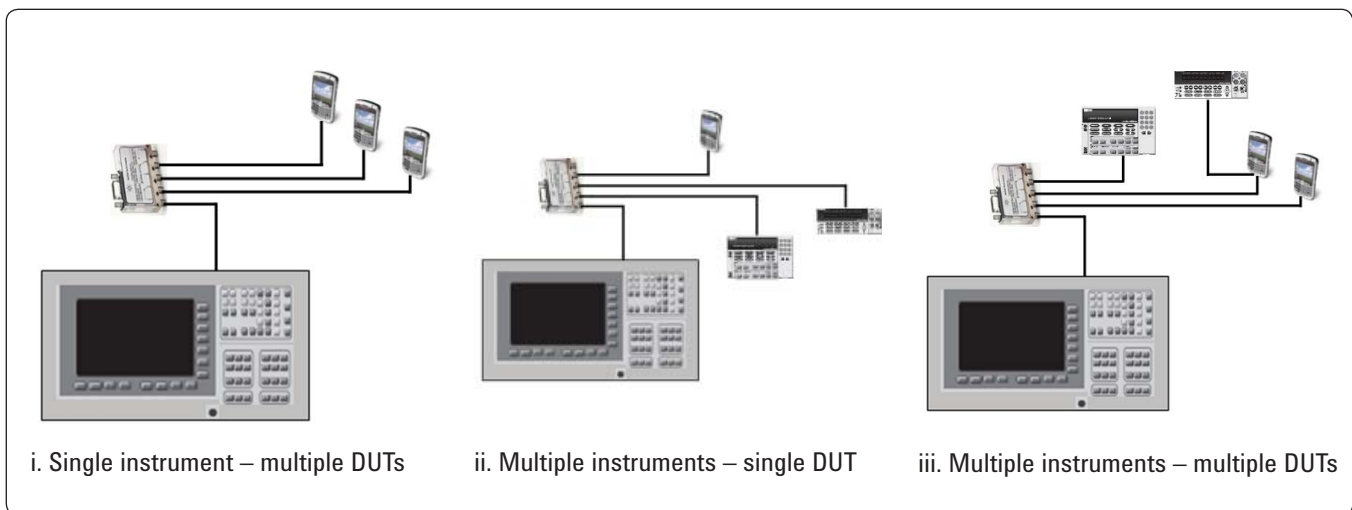


Figure 1. Examples of RF switching configurations

The RF Switch Driver

A single RF switch driver can be connected to the U2121A using the standard 37-pin D-Sub datacomm cable. The U2121A module is connected to the tester or workstation through a USB cable as shown in Figure 2.

The RF switch driver provides digital outputs that drive relay coils and digital inputs that can read the position of switch contacts. The board is designed to drive coils continuously or with programmable-width pulses. Continuously driving fail-safe switches typically requires a significant amount of current to energize a coil (100 mA to 300 mA for each 24-V coil). The RF switch driver can drive a total of 1 A continuously. This is sufficient to support fail-safe and latching-relay switches, providing greater flexibility in the selection of the best switch for your specific application.

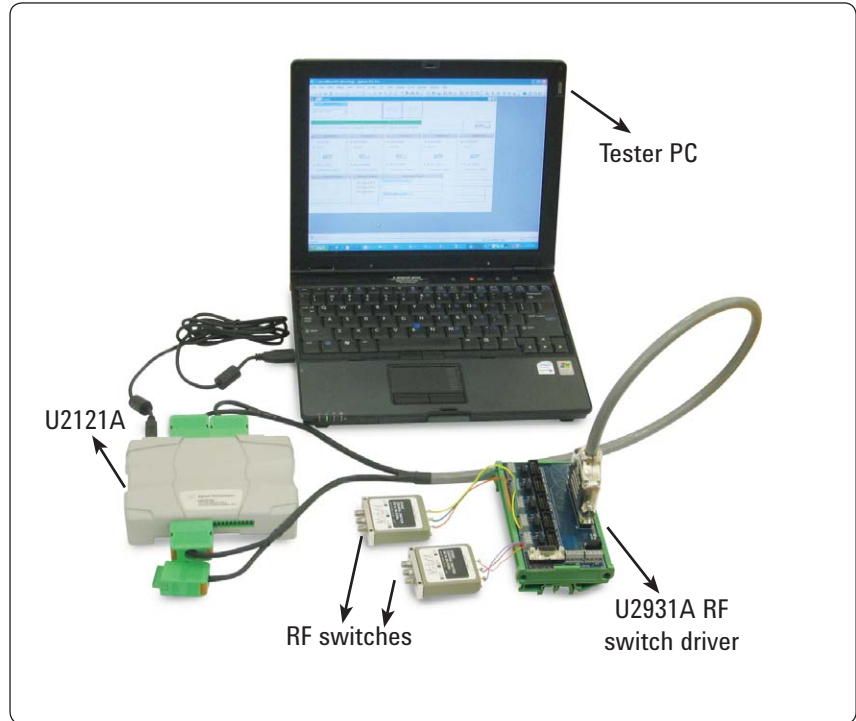


Figure 2. Example of a general RF test system

Programmatic Control

To automate switching through the total solution, programmatic control plays a vital role. The example shown in Figure 3 is written in Agilent VEE Pro 8.5 and runs in Agilent VEE Runtime, which is bundled with the RF switch driver. The simple and intuitive interface is designed to let you easily control and monitor up to five channels in a switch module.

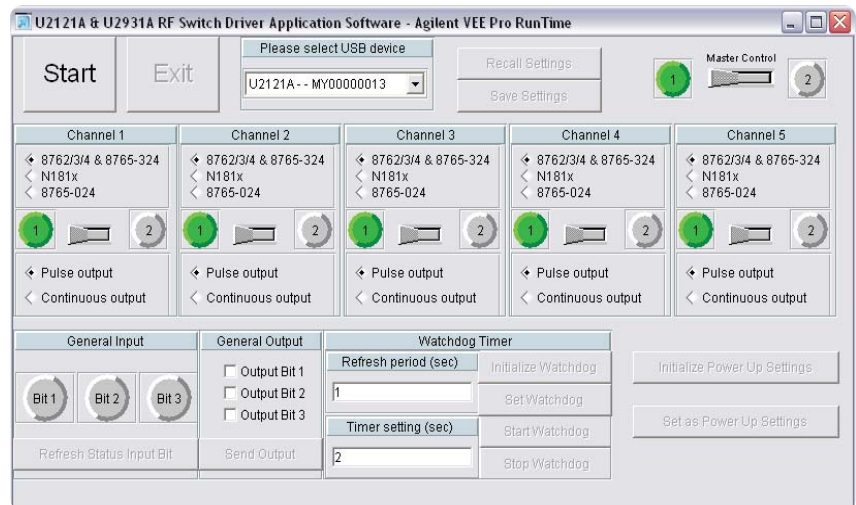


Figure 3. VEE Runtime control panel for the RF switch driver

Recommended Applications

This solution is a good fit for R&D and design-validation applications that typically require a few switches and a few instruments in a simple, compact test system. Several testing applications are possible:

- Mobile phones
- Bluetooth headsets
- Cordless phones
- Medical electronics
- Broadband CATV
- Radar systems

Conclusion

The Agilent U2121A-based solution is a cost-effective, easy-to-use, and convenient way to implement RF switching in small test systems for a variety of applications. The simplified installation, operation of the digital I/O card, and the breakout module allow straightforward control of small RF switching systems. This helps you to quickly create simple yet cost-effective RF switching systems.



Agilent Email Updates

www.agilent.com/find/emailupdates
Get the latest information on the products and applications you select.



Agilent Direct

www.agilent.com/find/agilentdirect
Quickly choose and use your test equipment solutions with confidence.



www.agilent.com/find/open
Agilent Open simplifies the process of connecting and programming test systems to help engineers design, validate and manufacture electronic products. Agilent offers open connectivity for a broad range of system-ready instruments, open industry software, PC-standard I/O and global support, which are combined to more easily integrate test system development.

Remove all doubt

Our repair and calibration services will get your equipment back to you, performing like new, when promised. You will get full value out of your Agilent equipment throughout its lifetime. Your equipment will be serviced by Agilent-trained technicians using the latest factory calibration procedures, automated repair diagnostics and genuine parts. You will always have the utmost confidence in your measurements.

Agilent offers a wide range of additional expert test and measurement services for your equipment, including initial start-up assistance, onsite education and training, as well as design, system integration, and project management.

For more information on repair and calibration services, go to:

www.agilent.com/find/removealldoubt

www.agilent.com

For more information on Agilent Technologies' products, applications or services, please contact your local Agilent office. The complete list is available at:

www.agilent.com/find/contactus

Americas

Canada	(877) 894-4414
Latin America	305 269 7500
United States	(800) 829-4444

Asia Pacific

Australia	1 800 629 485
China	800 810 0189
Hong Kong	800 938 693
India	1 800 112 929
Japan	0120 (421) 345
Korea	080 769 0800
Malaysia	1 800 888 848
Singapore	1 800 375 8100
Taiwan	0800 047 866
Thailand	1 800 226 008

Europe & Middle East

Austria	0820 87 44 11
Belgium	32 (0) 2 404 93 40
Denmark	45 70 13 15 15
Finland	358 (0) 10 855 2100
France	0825 010 700*
	*0.125 € fixed network rates
Germany	01805 24 6333**
	**0.14€/minute
Ireland	1890 924 204
Israel	972-3-9288-504/544
Italy	39 02 92 60 8484
Netherlands	31 (0) 20 547 2111
Spain	34 (91) 631 3300
Sweden	0200-88 22 55
Switzerland (French)	41 (21) 8113811(Opt 2)
Switzerland (German)	0800 80 53 53 (Opt 1)
United Kingdom	44 (0) 118 9276201

Other European Countries:

www.agilent.com/find/contactus

Revised: October 24, 2007

Product specifications and descriptions in this document subject to change without notice.

© Agilent Technologies, Inc. 2008
Printed in USA, March 18, 2008
5989-8069EN



Agilent Technologies