

16092A-02B

Information Only Service Note

Supersedes:
16092A-02A

16092A Spring Clip Fixture

Serial Numbers: ALL
Manufacturing ID Number: N/A

This service note provides the updated part numbers and figures for both RoHS and non-RoHS 16092A Spring Clip Fixture

Parts Required:

P/N	Description	Qty.
-----	-------------	------

Parts required depends on whether RoHS or non-RoHS 16092A is serviced.

Non-RoHS unit – Refer to [Situation 1](#)

RoHS unit – Refer to [Situation 2](#)

ADMINISTRATIVE INFORMATION

Calibration Required
 Calibration NOT Required

PRODUCT LINE: WN
AUTHOR: LS

ADDITIONAL INFORMATION:

Support part information for non-RoHS and RoHS 16092A Spring Clip Fixture
Non-RoHS Fixture "MY43100001 – MY43199999" / "SG43100001 – SG43199999" OR RoHS Fixture "MY43200001/SG43200001 and above"

Serial Number:

Non-RoHS Fixture “MY43100001 – MY43199999” or “SG43100001 – SG43199999”

RoHS Fixture “MY43200001 and above” or “SG43200001 and above”

Situation 1:

For non-RoHS 16092A Spring Clip Fixture
(S/N: MY431xxxxx/SG431xxxxx and below).

Solution/Action:

Shown are the supported parts and their respective RoHS compliant replacement support part. RoHS conversion involves with design and dimension change which result in the RoHS support part backward incompatible with non-RoHS 16092A. Special handling is needed while using the RoHS replacement part on non-RoHS 16092A. The original support part number is replaced by the respective “RoHS Compliant Replacement Part”. Once the original support part is depleted, please proceed to obtain the RoHS compliant support part. Please refer to Figure 1-1 and Table 1-1 for the respective replacement part accordingly.

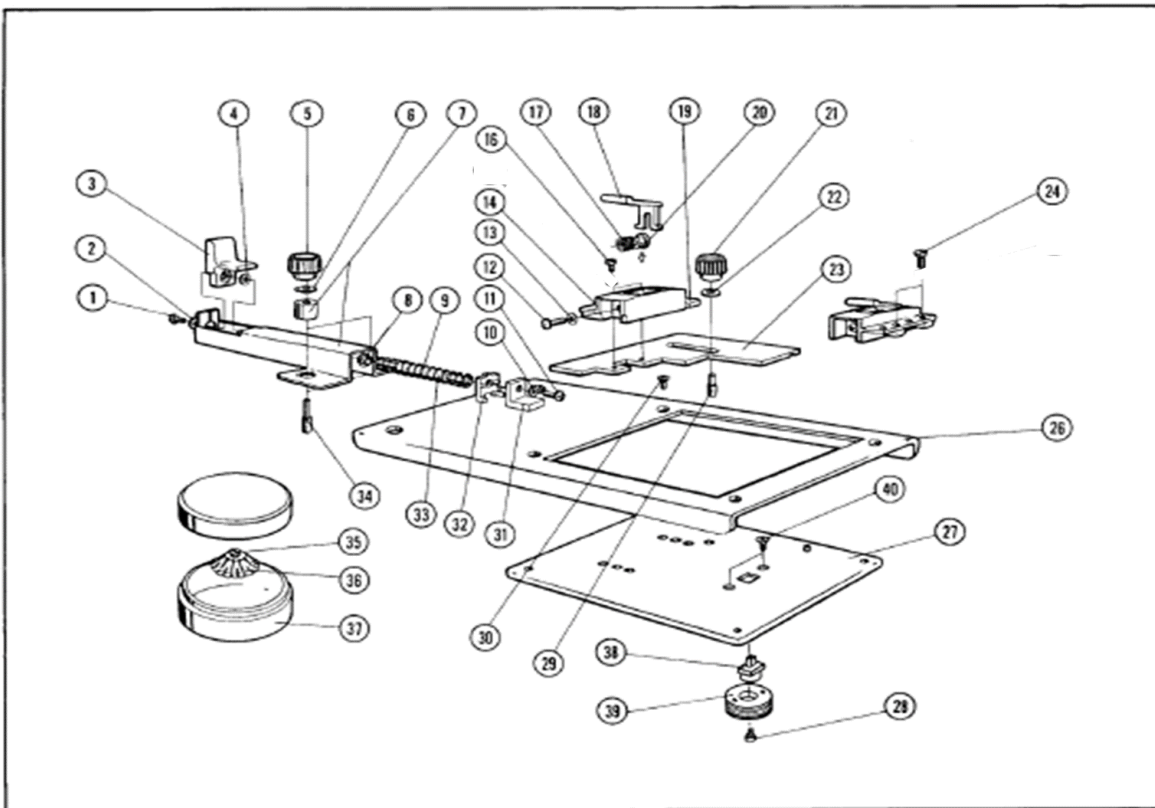


Figure 1-1

NOTE: For RoHS Compliant Upper Level Assembly Replacement Part, if multiple parts are replaced by a common higher assembly part, only order ONE part of the higher level common assembly.

Shown in Table 1-1 are the original support part and its compatible RoHS replacement part/assembly.

Remarks:

<*1> Replace all the associated parts marked with <*1> as they are mutually dependent.

<*2> Replace all the associated parts marked with <*2> as they are mutually dependent.

<*3> Replace all the associated parts marked with <*3> as they are mutually dependent

Table 1-1

Ref /D	Part Number	Description	Qty.	RoHS Compliant Replacement Part	Description	Qty.
1	0520-0174	SCREW	1	<*2>Set change: 0515-0659	SCREW	1
2	2190-0125	WASHER	1	<*2>Set change: 3050-0098	WASHER	1
3	16092-40015	LEVER	1	16092-40015	LEVER	1
4	3050-0230	WASHER	1	<*2>Set change: 3050-0098	WASHER	1
5	0370-2446	KNOB	2	5012-9057	KNOB	2
6	2190-0199	WASHER	2	2190-0199	WASHER	2
7	16092-65001	HOLDER	1	16092-65001	HOLDER	1
8	16092-23012	COLLAR	1	16092-23012	COLLAR	1
9	1460-0350	SPRING	1	1460-0350	SPRING	1
10	2190-0125	WASHER	1	<*2>Set change: 3050-1066	WASHER	1
11	0520-0174	SCREW	1	<*2>Set change: 0515-4293	SCREW	1
12	0520-0133	SCREW	2	<*1>Set change: 0515-0661	SCREW	2
13	2190-0103	WASHER	2	<*1>Set change: 3050-1066	WASHER	2
14	16092-40010	HOLDER	2	16092-40010	HOLDER	2
16	16092-24012	SCREW	2	16092-24012	SCREW	2
17	1460-0352 (16092-29001)	SPRING	2	16092-29001	SPRING	2
18	16092-40011 (16092-01201)	LEVER	2	16092-01201	LEVER	2
19	16092-40016	HOLDER	2	<*1>Set change: 16092-40616	HOLDER	2
20	16092-23010	SHAFT	2	16092-23010	SHAFT	2
21	0370-2446	KNOB	1	5012-9057	KNOB	1
22	2190-0199	WASHER	1	2190-0199	WASHER	1
23	16092-00611	PLATE	1	16092-00623	PLATE	1
24	16092-24011	SCREW	2	16092-24011	SCREW	2
26	16092-00210	TABLE	1	<*3>Set change: 16092-00271	TABLE	1
27	16092-65003	PLATE	1	<*3>Set change: 16092-65073	PLATE	1

28	1250-0907	CONTACT-RF CONNECTOR	1	1250-0907	CONTACT-RF CONNECTOR	1
29	16092-24010	SCREW	1	16092-24010	SCREW	1
30	0520-0163	SCREW	4	<*3>Set change: 0515-1946	SCREW	4
31	16092-29011	GROUND CONDUCTOR	1	16092-29011	GROUND CONDUCTOR	1
32	16092-40014	GUIDE	1	16092-40614	GUIDE	1
33	16092-23011	SHAFT	1	<*2>Set change: 16092-23611	SHAFT	1
34	16092-24013	SCREW	2	16092-24013	SCREW	2
35	16092-24012	SCREW	1	16092-24012	SCREW	1
36	16092-08010	GROUND SPRING	1	16092-08010	GROUND SPRING	1
37	1540-0622	CASE	1	9300-2603	CASE	1
38	16092-40018 (16092-40019)	CENTER POST WITH INSULATOR	1	16092-40019	CENTER POST WITH INSULATOR	1
39	16092-24014	GROUND SCREW	1	<*3>Set change: 16092-24614	GROUND SCREW	1
40	0520-0126	SCREW	2	<*3>Set change: 0515-2151	SCREW	2

Shown in Table 1-2 and Figure 1-2, Figure 1-3 are the sub-assemblies of 16092A.

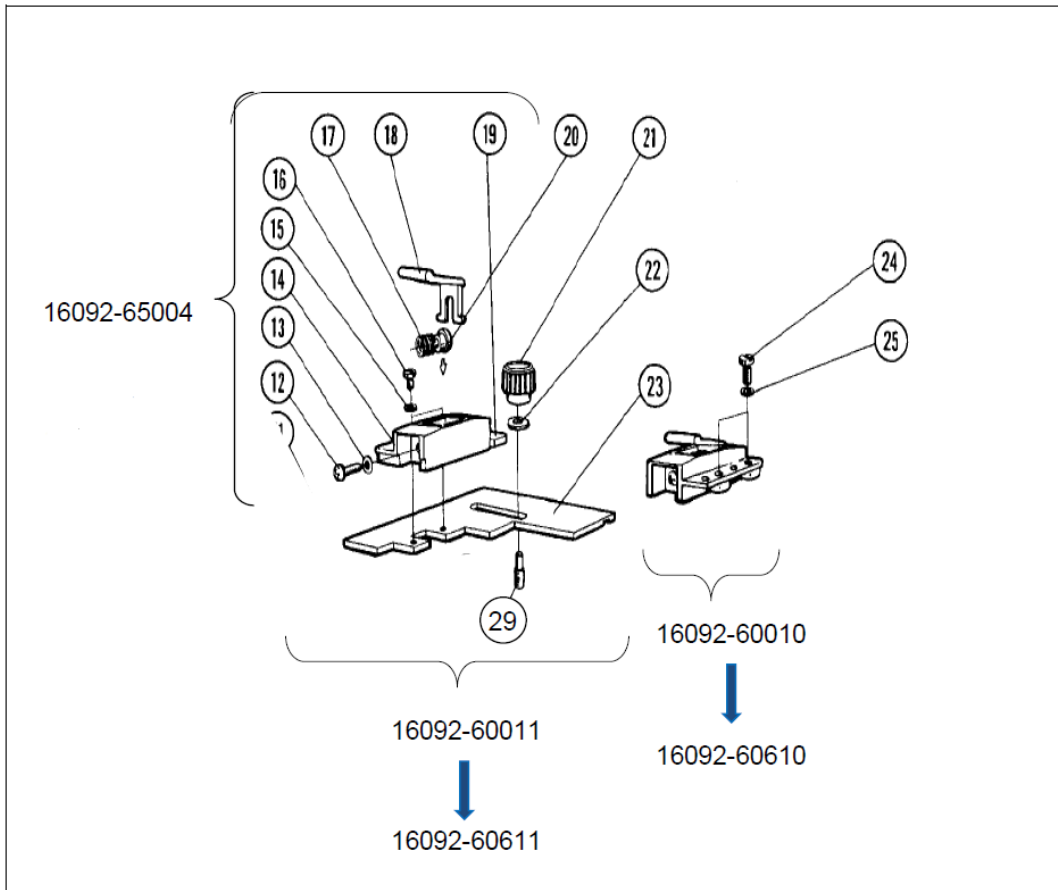


Figure 1-2

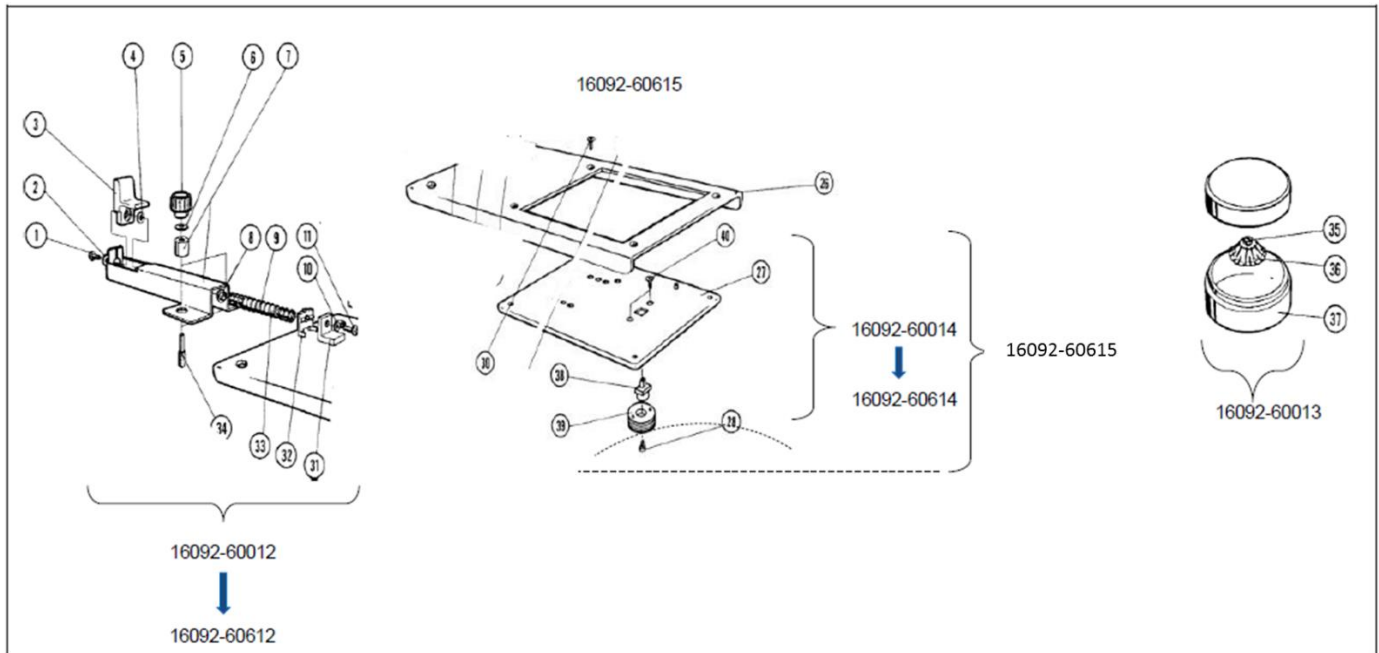


Figure 1-3

Table 1-2

Ref /D	Part Number	Description	Qty.	RoHS Compliant Replacement Part	Description	Qty.
	16092-60010	CLIP, COMPONENT	1	16092-60610	CLIP, COMPONENT	1
	16092-60011	CLIP, COMPONENT	1	16092-60611	CLIP, COMPONENT	1
	16092-60012	CLIP, COMPONENT	1	16092-60612	CLIP, COMPONENT	1
	16092-60013	GROUND SPRING	1	16092-60013	GROUND SPRING	1
	16092-60014	CONDUCTOR	1	16092-60614	CONDUCTOR	1
	16092-60614	CONDUCTOR ASSEMBLY	1	16092-60615	CONDUCTOR ASSEMBLY	1
	16092-65004	SPRING CLIP (L)	1	16092-65004	SPRING CLIP (L)	1

Situation 2:

For RoHS 16092A Spring Clip Fixture
(S/N: MY432xxxx and above).

Solution/Action:

Shown are the support parts for RoHS compliance 16092A Spring Clip Fixture. All the listed items are changed at RoHS conversion. Due to limited availability of RoHS compliance station and technical difficulties in RoHS soldering, only parts and support level that do not require RoHS soldering are supported. Shown are the supported RoHS compliance parts for RoHS 16092A Spring Clip Fixture. Shown in Table 2-1 and Figure 2-1 are the respective support parts for RoHS compliance 16092A unit.

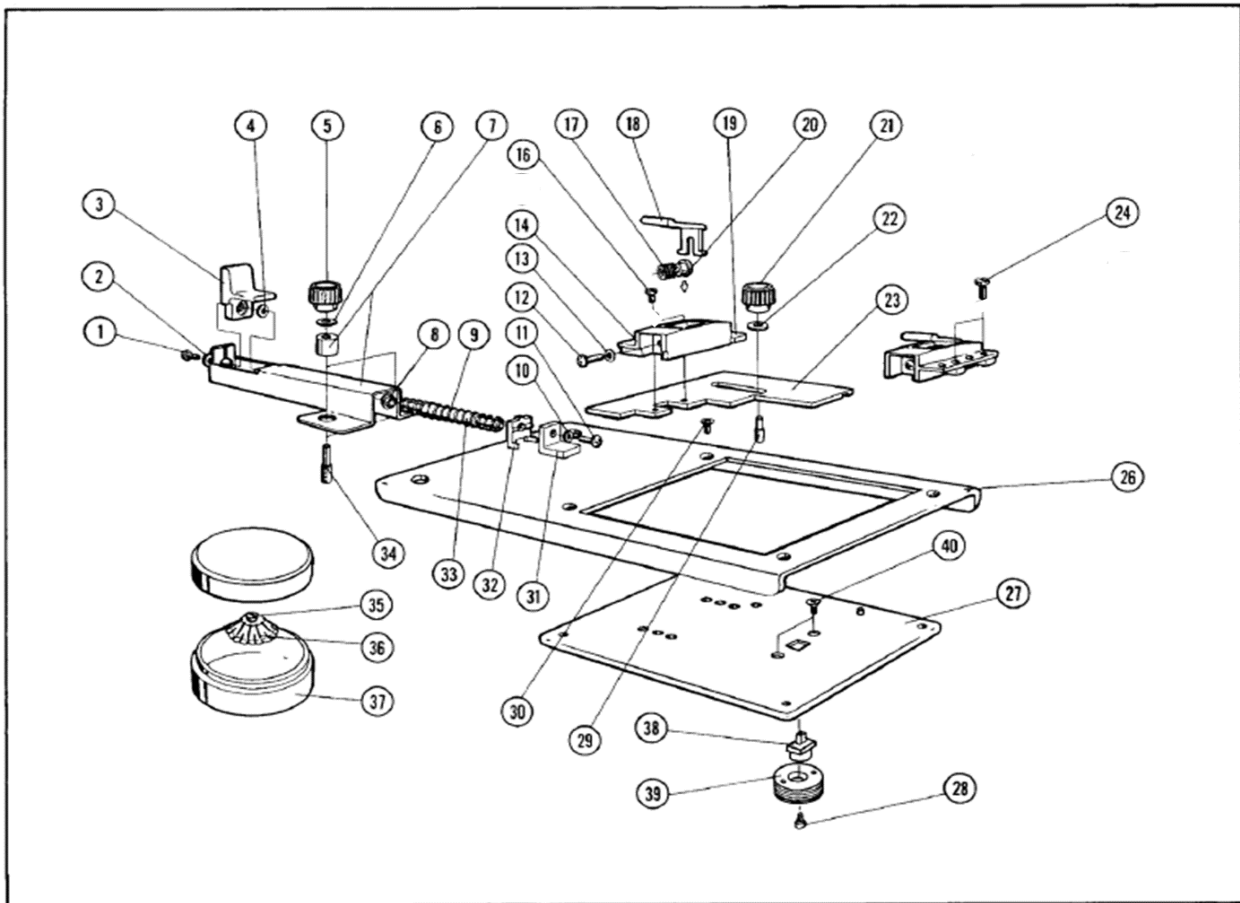


Figure 2-1

Table 2-1

Ref /D	RoHS Compliant Replacement Part	Description	Qty.
1	SCREW	0515-0659	1
2	WASHER	3050-0098	1
3	LEVER	16092-40015	1
4	WASHER	3050-0098	1
5	KNOB	5012-9057	2
6	WASHER	2190-0199	2

7	HOLDER	16092-65001	1
8	COLLAR	16092-23012	1
9	SPRING	1460-0350	1
10	WASHER	3050-1066	1
11	SCREW	0515-4293	1
12	SCREW	0515-0661	2
13	WASHER	3050-1066	2
14	HOLDER	16092-40010	2
16	SCREW	16092-24012	2
17	SPRING	16092-29001	2
18	LEVER	16092-01201	2
19	HOLDER	16092-40616	2
20	SHAFT	16092-23010	2
21	KNOB	5012-9057	1
22	WASHER	2190-0199	1
23	PLATE	16092-00611	1
24	SCREW	16092-24011	2
26	TABLE	16092-00271	1
27	PLATE	16092-65073	1
28	CONTACT-RF CONNECTOR	1250-0907	1
29	SCREW	16092-24010	1
30	SCREW	0515-1946	4
31	GROUND CONDUCTOR	16092-29011	1
32	GUIDE	16092-40614	1
33	SHAFT	16092-23611	1
34	SCREW	16092-24013	2
35	SCREW	16092-24012	1
36	GROUND SPRING	16092-08010	1
37	CASE	9300-2603	1
38	CENTER POST WITH INSULATOR	16092-40019	1
39	GROUND SCREW	16092-24614	1
40	SCREW	0515-2151	2

Shown in Table 2-2 and Figure 2-2, Figure 2-3 are the sub-assemblies of 16092A.

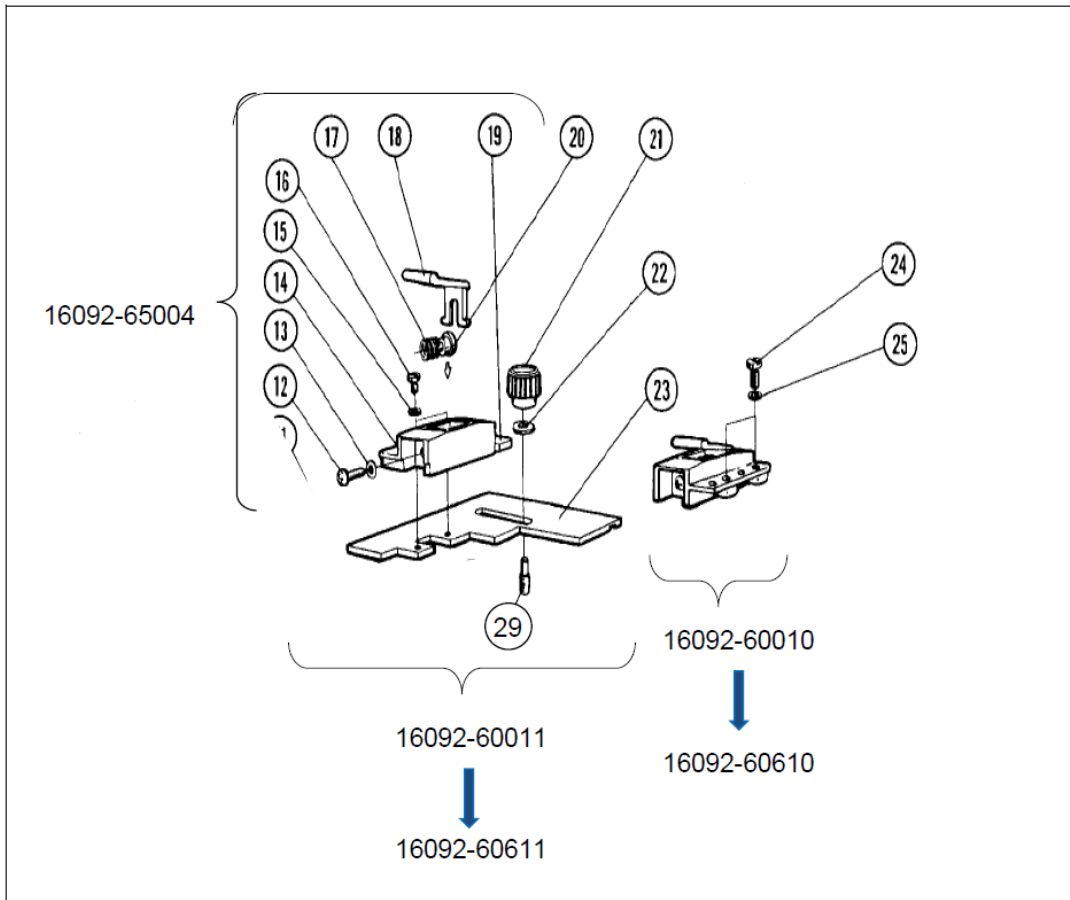


Figure 2-2

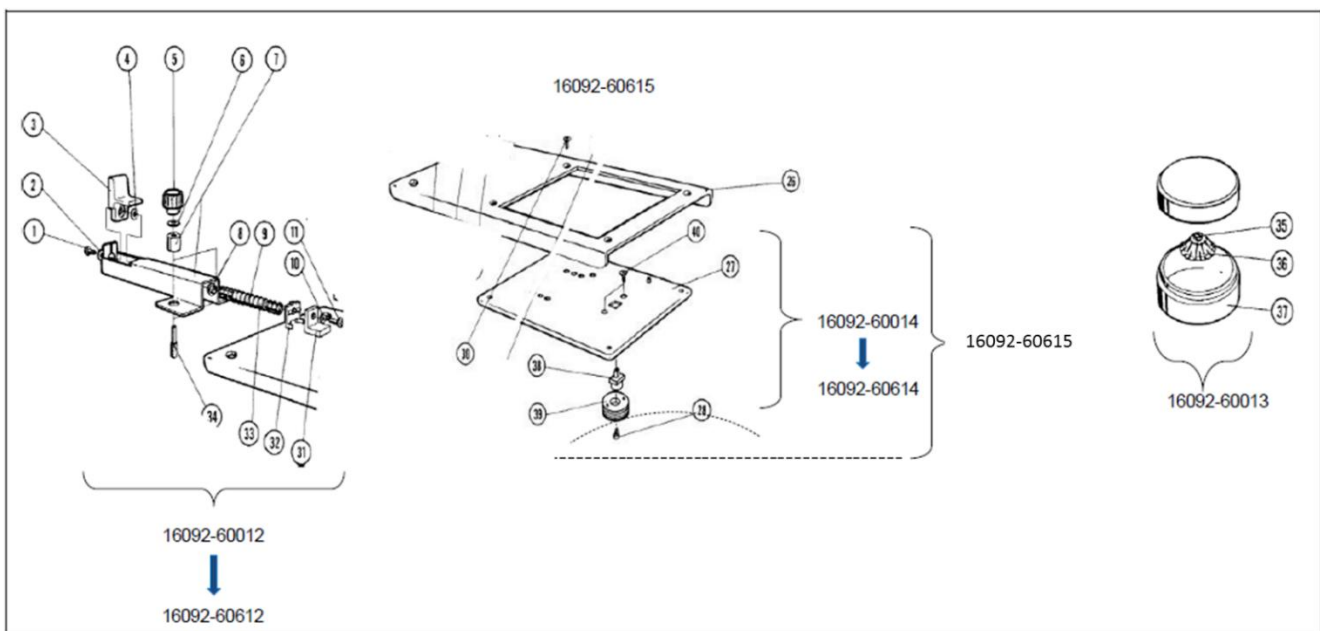


Figure 2-3

Table 2-2

Ref/D	RoHS Compliant Replacement Part	Description	Qty.
	16092-60610	CLIP, COMPONENT	1
	16092-60611	CLIP, COMPONENT	1
	16092-60612	CLIP, COMPONENT	1
	16092-60013	GROUND SPRING	1
	16092-60614	CONDUCTOR	1
	16092-60615	CONDUCTOR ASSEMBLY	1
	16092-65004	SPRING CLIP (L)	1

Revision History:

Date	Service Note Revision	Author	Reason for Change
20 Feb 2013	16092A-02	LS	As Published
09 Oct 2017	16092A-02A	BS	Removed 15,25 Washer's Part Number
25 Jul 2018	16092A-02B	BS	Update new Knob part number from 0370-2446 to 5012-9057