

INFORMATION ONLY

16194A-01A

S E R V I C E N O T E

Supersedes:
16194A-01

16194A High Temperature Component Test Fixture

**Serial Numbers: Non-RoHS Fixture “MY43100001 – MY43200187”,
“SG43100001 – SG43200187”**

OR

**RoHS Fixture “MY43200188 – MY43299999”,
“SG43200188 – SG43299999”**

**This service note provides the updated part numbers and figures for both
RoHS and non-RoHS 16194A High Temperature Component Test Fixture**

Parts Required:

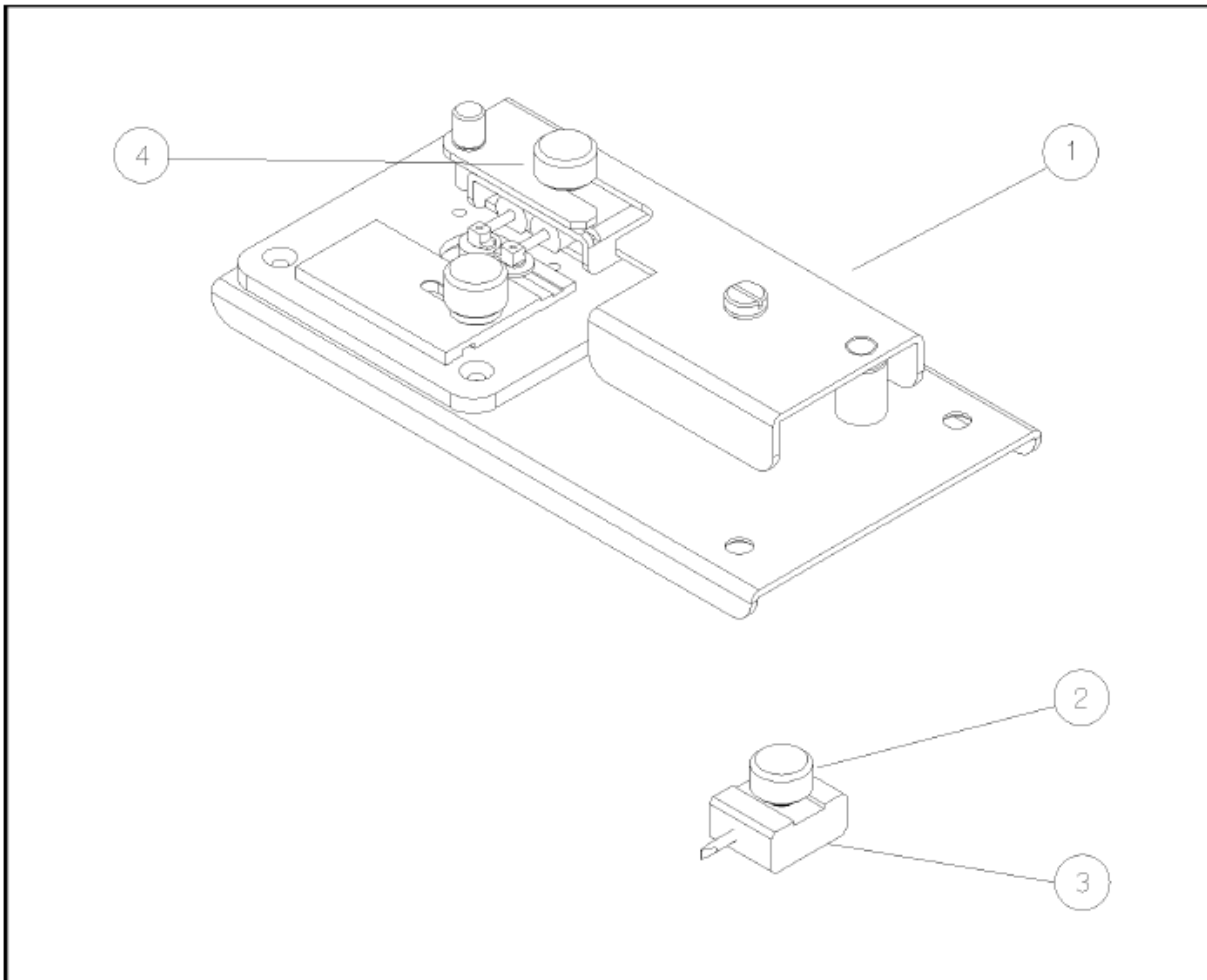
Details refer to table 1-1, 1-2, 1-3 shown below.

ADMINISTRATIVE INFORMATION

SERVICE NOTE CLASSIFICATION:	
INFORMATION ONLY	
<input type="checkbox"/> Calibration Required	PRODUCT LINE: WN
<input checked="" type="checkbox"/> Calibration NOT Required	AUTHOR: LS
ADDITIONAL INFORMATION: Support part information for 16194A High Temperature Component Test Fixture	

Situation:**For both RoHS and non-RoHS 16194A High Temperature Component Test Fixture****Solution/Action:**

Shown are the support parts for RoHS and non-RoHS compliance 16194A High Temperature Component Test Fixture. All the listed items are changed at RoHS conversion. Due to limited availability of RoHS compliance station and technical difficulties in RoHS soldering, only parts and support level that do not require RoHS soldering are supported. Shown are the supported RoHS compliance parts for 16194A High Temperature Component Test Fixture.



ac504001

Figure 1-1

NOTE: For RoHS Compliant Upper Level Assembly Replacement Part, if multiple parts are replaced by a common higher assembly part, only order ONE part of the higher level common assembly.

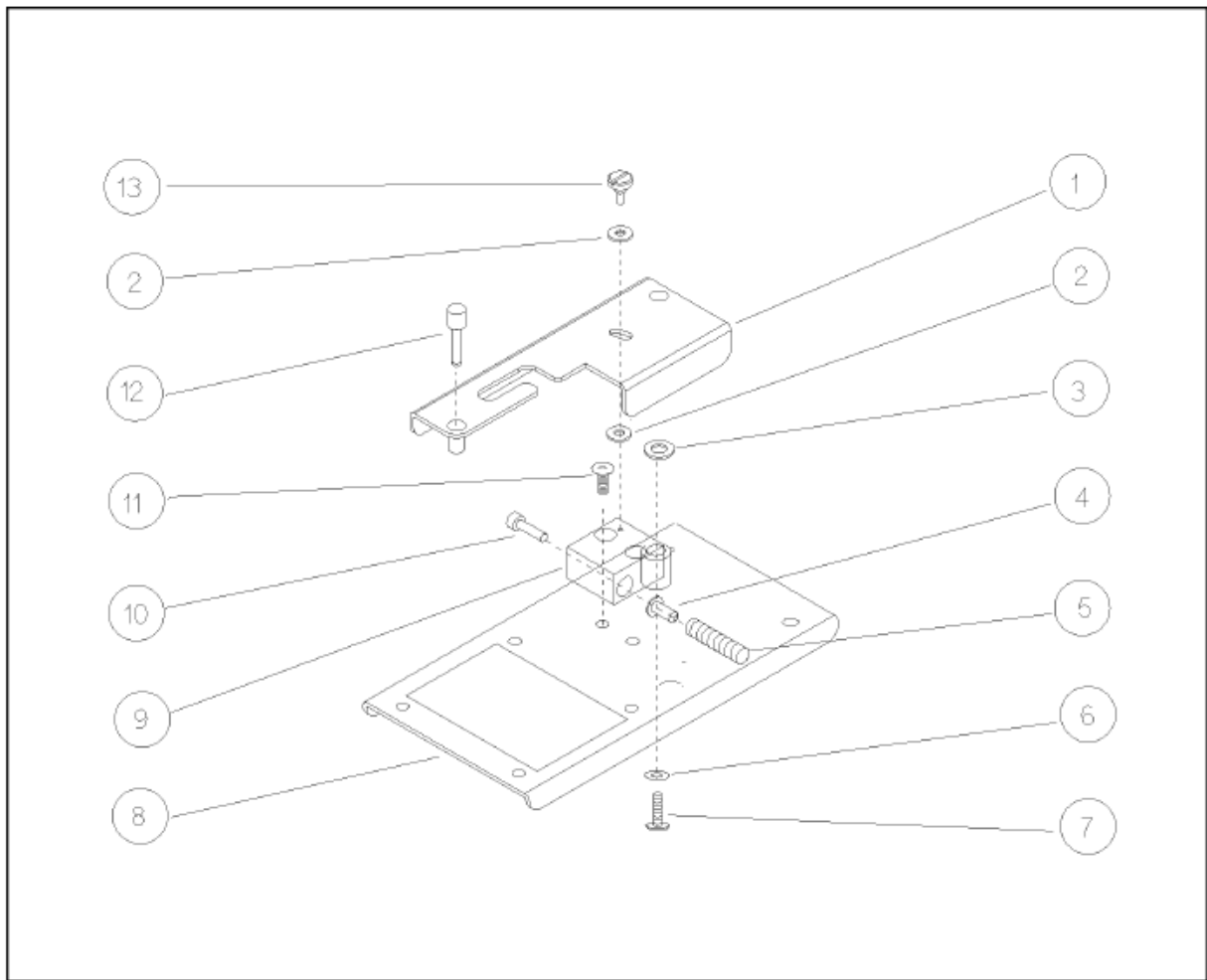
Shown in table 1-1, 1-2 are the original support part and its compatible RoHS replacement part/assembly.

Table 1-1: Replaceable Parts for Main Assembly

Ref/ D	Part Number	Description	Qty.	RoHS Compliant Replacement Part	Description	Qty.
1	(not assigned)	Main Assembly	1	(not assigned)	Main Assembly	1
2	16194-24007	Knob	1	16194-24007	Knob	1
3	16194-60002	Device Holder for SMD	1	16194-60002	Device Holder for SMD	1
4	16194-60001	Device Holder for Leaded Device	1	16194-60001	Device Holder for Leaded Device (*1)	1

Remarks:

(*1) The parts in the Holder for Leaded Device cannot be replaced separately.

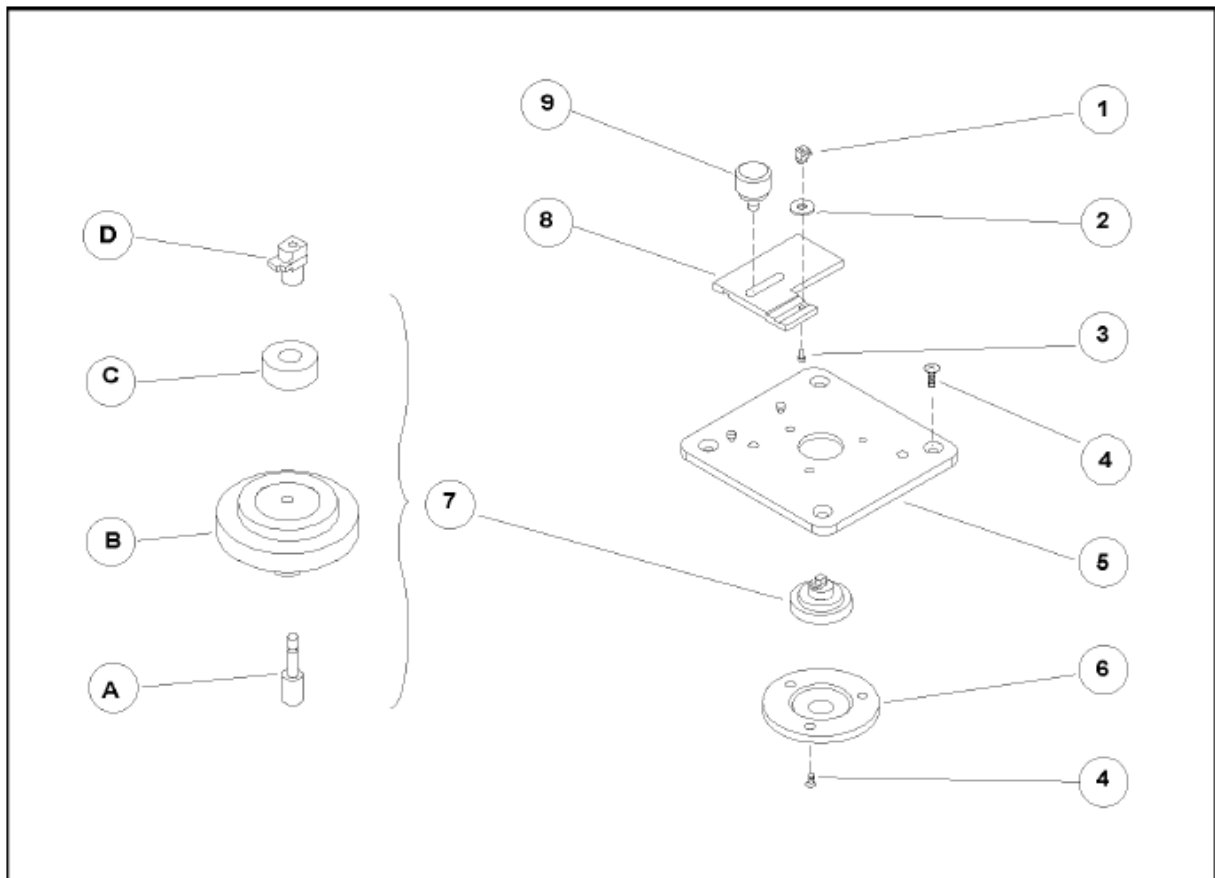


ac504002

Figure 1-2

Table 1-2: Replaceable Parts around the Holder Arm Assembly

Ref/ D	Part Number	Description	Qty.	RoHS Compliant Replacement Part	Description	Qty.
1	16194-01201	Arm	1	16194-01201	Arm	1
2	3050-1139	Washer, Teflon	2	3050-1139	Washer, Teflon	2
3	16194-25003	Spacer	1	16194-25003	Spacer	1
4	16191-24010	Pin	1	16191-24010	Pin	1
5	1460-2380	Spring	1	1460-2881	Spring	1
6	3050-0891	Washer	1	3050-0891	Washer	1
7	0515-1550	Screw, Pan Head, M3-L8	1	0515-0372	Screw, Pan Head, M3-L8	1
8	16194-00201	Fixture Chassis	1	16194-00201	Fixture Chassis	1
9	16194-24008	Housing	1	16194-24008	Housing	1
10	0515-1052	Screw, Hex	1	0515-1052	Screw, Hex	1
11	0515-0914	Screw, Flat Head, M3-L6	2	0515-1227	Screw, Flat Head, M3-L6	2
12	16194-24009	Latch	1	16194-24009	Latch	1
13	16194-25004	Screw	1	16194-25004	Screw	1



AC504003

Figure 1-3

Table 1-3: Replaceable Parts for Test Stage

Ref/ D	Part Number	Description	Qty.	RoHS Compliant Replacement Part	Description	Qty.
1	16194-24002	Electrode	1	16194-24002	Electrode	1
2	3050-1139	Washer, Teflon	1	3050-1139	Washer, Teflon	1
3	0515-2421	Screw, Pan Head, M1.4	1	0515-5363	Screw, Pan Head, M1.4	1
4	0515-0914	Screw, Flat Head, M3	7	0515-1946	Screw, Flat Head, M3	7
5	16194-20001	Test Stage	1	16194-20001	Test Stage	1
6	16453-24011	Flange	1	16453-24011	Flange	1
7	(not assigned)	Center Conductor Assembly	1	(not assigned)	Center Conductor Assembly	1
8	16194-20002	Ground Plate	1	16194-20002	Ground Plate	1
9	16194-24005	Knob	1	16194-24005	Knob	1
A	1250-0816	Contact of the APC- 7 Center Pin	1	1250-0816	Contact of the APC-7 Center Pin	1
B	16453-60001	Bead Assembly	1	16453-60001	Bead Assembly	1
C	16194-25001	Insulator	1	16194-25001	Insulator	1
D	16194-24001	Contact of the Electrode	1	16194-24001	Contact of the Electrode	1

Post Repair Procedure

After unit service is completed, proceed to perform “Short and Open Impedance Check” as described in 16194A Service Guide Chapter 4 - Troubleshooting.

Revision History:

Revision Number	Date	Author	Reason For Change
16194A-01	23 Apr 2013	LS	As published
16194A-01A	07-Aug-2014	jm	Add Non-RoHS and RoHS serial-numbers