

# Modification Available Performance Enhancement Service Note

Supersedes:  
NONE

## E9986E, In-Line Four-Module In-Circuit Test System

### Serial Numbers:

MY49430585, MY49430623, MY57410001 - MY57411166, MY61280102 - MY61280157,  
MY63415001 - MY63415002

**The Problem** – Existing tailgate sensor cable may be too short for small board sizes; an extension cable can be purchased.

### Parts Required:

P/N	Description	Qty.
E9988-61633	Inline 3070 Sensor 3-Core 0.25mm Extension Cable, 500mm	1

### ADMINISTRATIVE INFORMATION

<input type="checkbox"/> Calibration Required	PRODUCT LINE: PL80
<input checked="" type="checkbox"/> Calibration NOT Required	AUTHOR: Wee-Sheng

### ADDITIONAL INFORMATION:

Estimated Labor is 0.25 hour. Installable by trained customer. Interested customers can purchase this modification.

**Situation:**

Existing tailgate sensor cable may be too short to move the sensor to desired position if the testable board size is very small. E.g. 50mm (L) x 60mm (W).

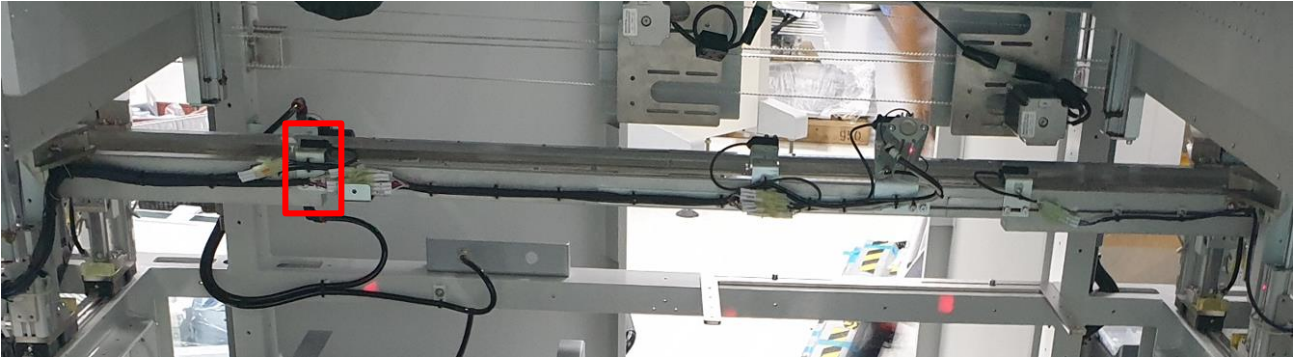
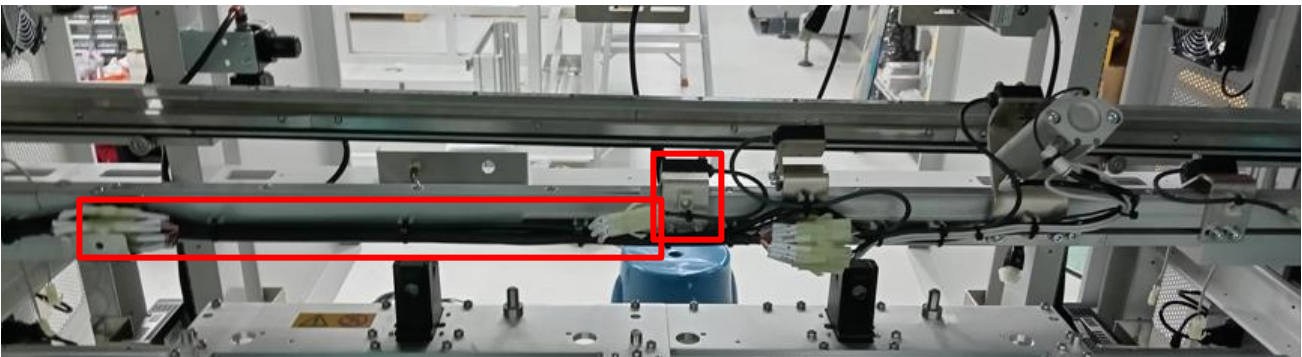


Figure 1: Sensor not able to move toward desired position.

**Solution/Action:**

An extension cable (P/N: E9988-61633) could be added to allow the tailgate sensor shiftable nearer toward slowdown sensor.



**Revision History:**

Date	Service Note Revision	Author	Reason for Change
Oct 15 2024	01	Wee Sheng	As Published