

INFORMATION ONLY – DOES NOT COMMUNICATE
A MODIFICATION OR SAFETY CONDITION

4395A-15

S E R V I C E N O T E

Supersedes:
[NONE]

Agilent 4395A Network/Spectrum/Impedance Analyzer

**Serial Numbers: JP1KE02206 and above
MY41100261 and above**

New Replaceable Parts for Probe Power Supply

Parts Required: See Solution / Action

To Be Performed By: Agilent-Qualified Personnel

ADMINISTRATIVE INFORMATION

SERVICE NOTE CLASSIFICATION: INFORMATION ONLY
AUTHOR: TO PRODUCT LINE: WN
ADDITIONAL INFORMATION:

© AGILENT TECHNOLOGIES, INC. 2002
PRINTED IN U.S.A.



October 8, 2002

Situation:

New filter board (P/N E4970-66530) and wire assembly (P/N E4970-61685) were added to the probe power line of the 4395A in order to improve the isolation between the RF circuits and probe power cable. The allocation of replaceable parts for the probe power line was changed.

Solution/Action:

When replacing the new parts of the probe power line, order appropriate parts referring to the following parts list.

Replaceable Parts List:

P/N	Description	Qty
1 E4970-61685	Wire Assembly	1
2 E4970-66530	Filter Board	1
3 2190-0584	Washer	2
4 0515-0924	Screw M3	2
5 1400-1334	Cable Clamp	1
6 E4970-61641	Wire Assembly	1

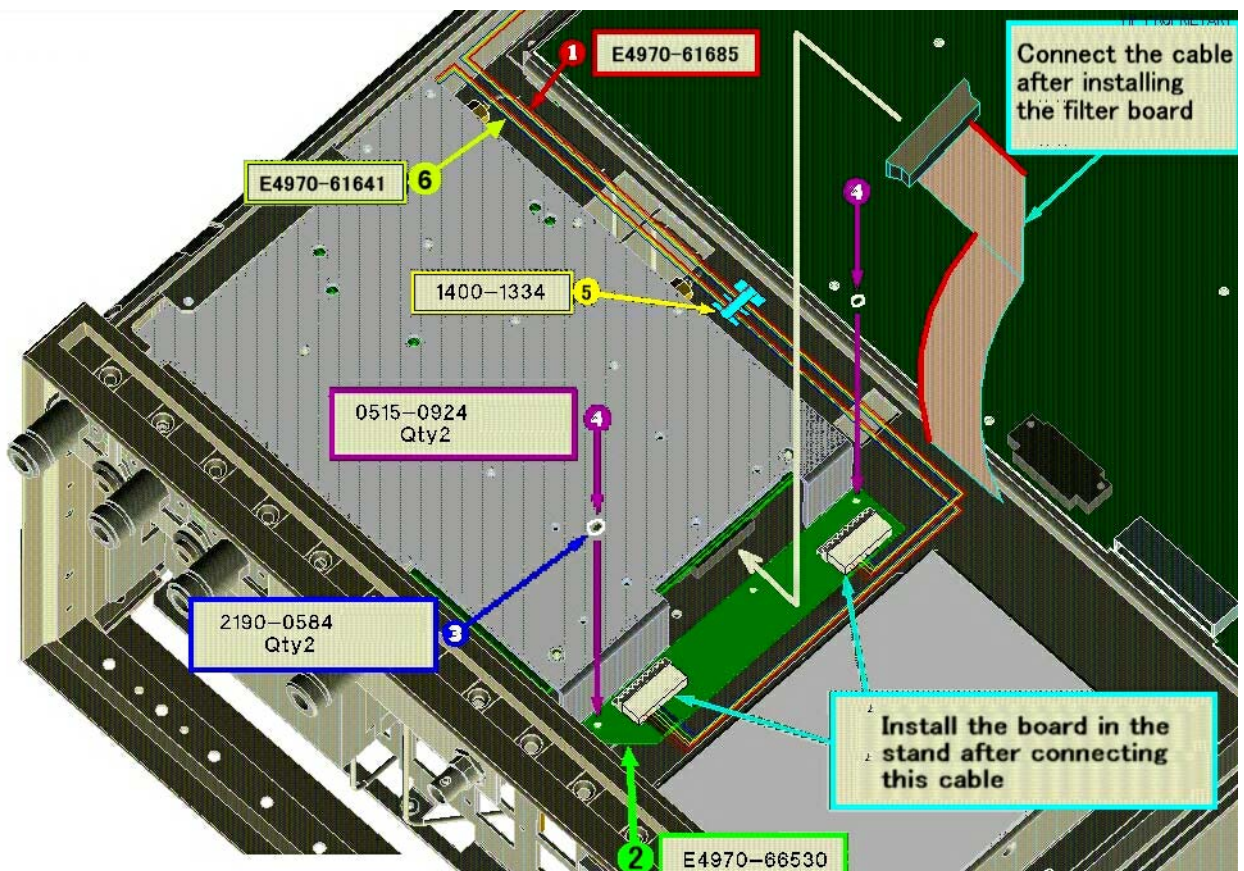


Figure 1 Filter board replacement