

INFORMATION ONLY – DOES NOT COMMUNICATE  
A MODIFICATION OR SAFETY CONDITION

**81104A-02**

**S E R V I C E N O T E**

---

Supersedes:  
NONE

**81100 Family Pulse/Pattern Generator**

**Serial Numbers: [0000A00000 / 9999Z99999]**

**Procedure to replace the display unit**

**ADMINISTRATIVE INFORMATION**

SERVICE NOTE CLASSIFICATION: <b>INFORMATION ONLY</b>
AUTHOR: SM    PRODUCT LINE: 24
ADDITIONAL INFORMATION:

© AGILENT TECHNOLOGIES, INC. 2001  
PRINTED IN U.S.A.

November 29, 2001



**Situation:**

If the display module is pressed into the snap-in mount just by pushing on its top, the glass of the display can break.

This also may happen if too much force is used to remove a display from the snap-in mount.

**Solution/Action:**

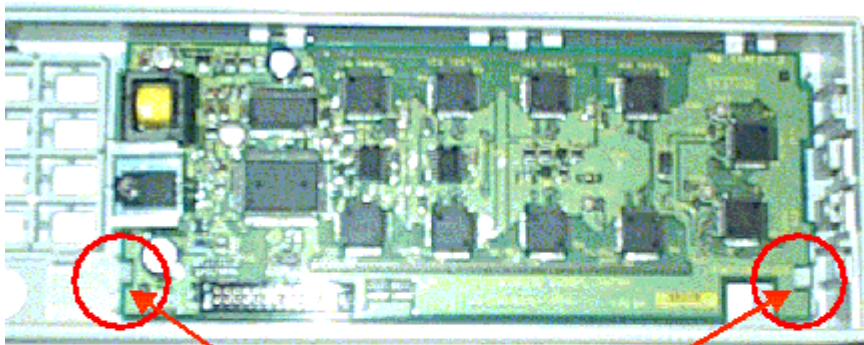
To avoid unnecessary glass breaks do the following steps when you replace the display module:

**Removing the display module:**

After you have taken off the front panel, carefully press aside the two plastic clips that hold the display in its mount (see picture). Then, with the clips still pressed aside, turn over the front panel and carefully allow the display module fall out of the front panel.

**Inserting the display module:**

After you inserted the display into the upper plastic holders DO NOT press on the display module! Carefully press aside the two plastic clips (see picture) and allow the display module fall into the mount.



Carefully press aside these plastic clips while installing or removing the display!