

# E4419B-21A

## S E R V I C E                      N O T E

Supersedes:  
E4419B-21

### EPM Power Meter

Serial Numbers: ALL

**Compatibility between front panel assembly and processor assembly.**

**Parts Required:**

P/N	Description	Qty.
NONE		

### ADMINISTRATIVE INFORMATION

SERVICE NOTE CLASSIFICATION:	
<b>INFORMATION ONLY</b>	
AUTHOR: CH	PRODUCT LINE: WC
ADDITIONAL INFORMATION:	

© AGILENT TECHNOLOGIES, INC. 2009  
PRINTED IN U.S.A.

March 4, 2009

Rev. 16



**Situation:**

Agilent Technologies is changing the design of its EPM power meter's front panel assembly due to the obsolescence of LCD's IC controller resides inside the front panel assembly. This new version of front panel assembly is incompatible with the old version of processor assembly. The performance and functions of the power meter remain the same. The replacement and calibration procedures remain the same as well. Please refer below for the part numbers to be ordered.

Description	Part Number With Old Design	Part Number With New Design
Processor Assembly	E4418-60031	E4418-66001
Front Panel Sub-assembly	E4418-61001	E4418-61045
Front Panel Assembly for: Agilent E4419B and Agilent E4419B Option 002	E4419-61001	E4419-60201
Front Panel Assembly for: Agilent E4419B Option 003	E4419-61002	E4419-60202

**Solution/Action:**

When replacing any of the assemblies, it is important to ensure that both assemblies are compatible with each other in order to function properly. It is a must to have the revision for both front panel assembly and processor assembly checked before and after the replacement. The compatibility table is as shown below.

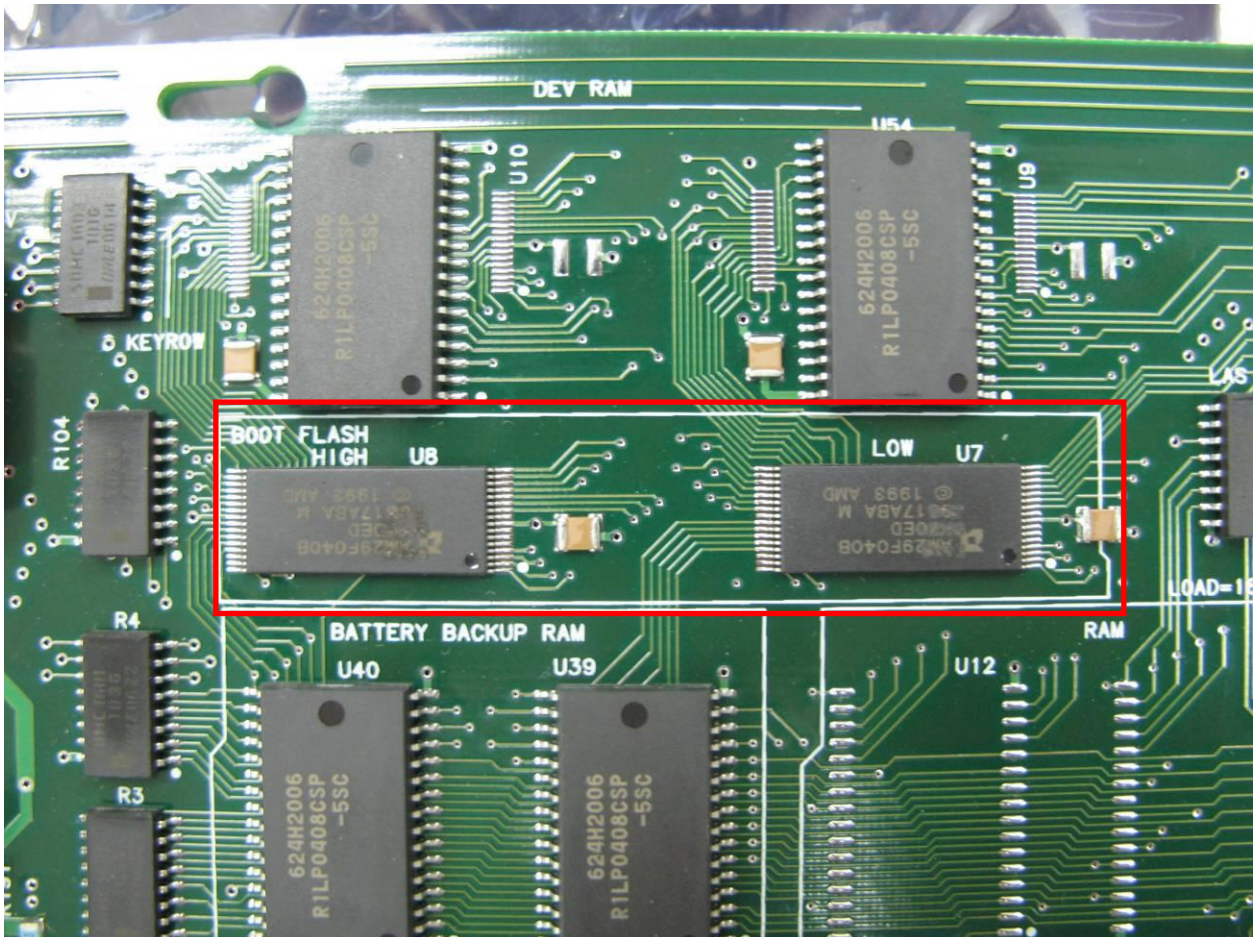
	Old version of front panel assembly	New version of front panel assembly
Old version of processor assembly	Compatible	Incompatible
New version of processor assembly	Compatible	Compatible

The revision of the front panel assembly and processor assembly can be differentiated based on instructions below.

### Processor Assembly

The new processor assembly can be differentiated through U7 and U8 on the assembly.

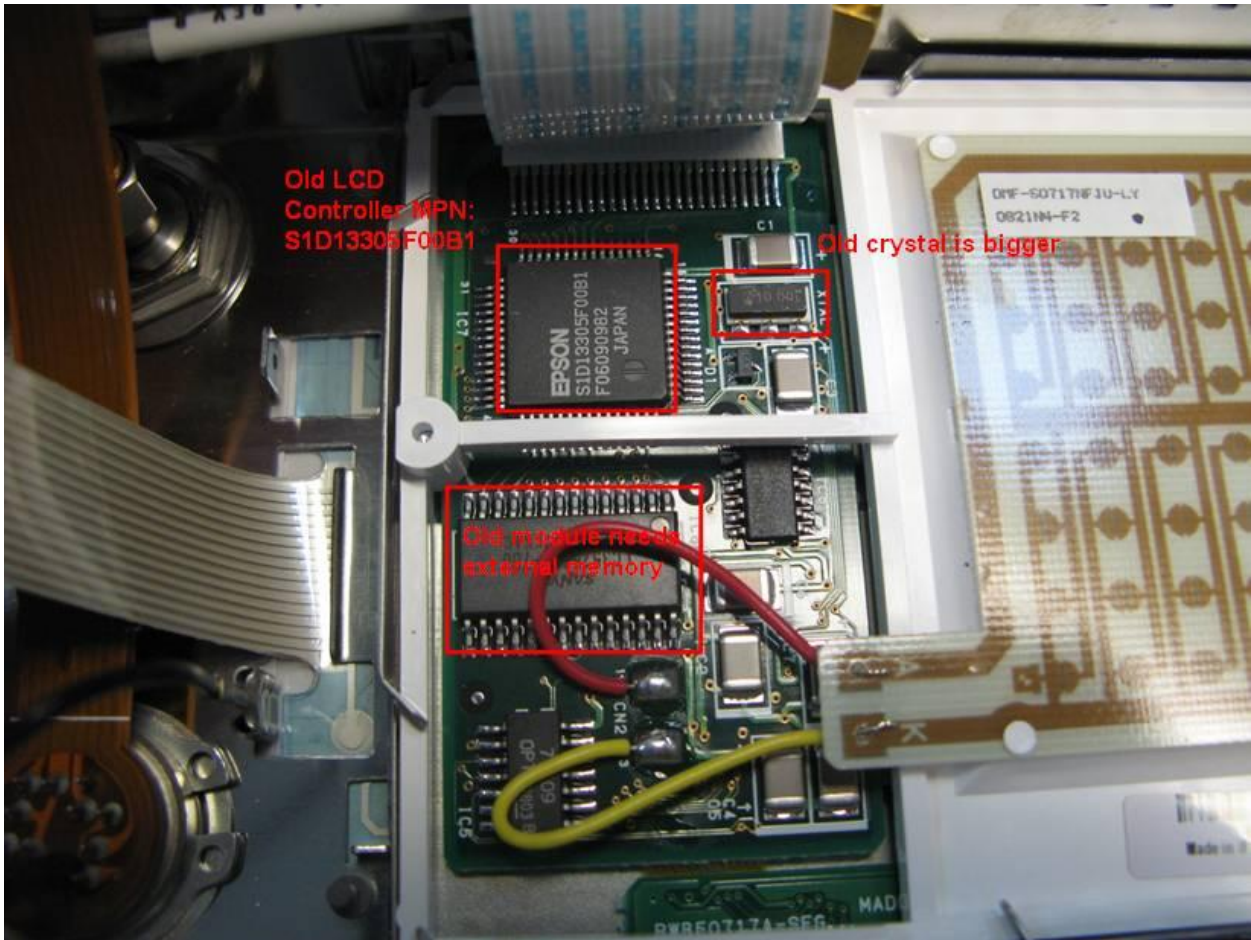
1. Zoom to location U7 and U8 of the processor assembly.



2. Verify that the 5X5 part number on the flash IC is E4418-80028 and E4418-80029 for U7 and U8 respectively. The old 5X5 part number is E4418-80019 and E4418-80020 for U7 and U8 respectively.

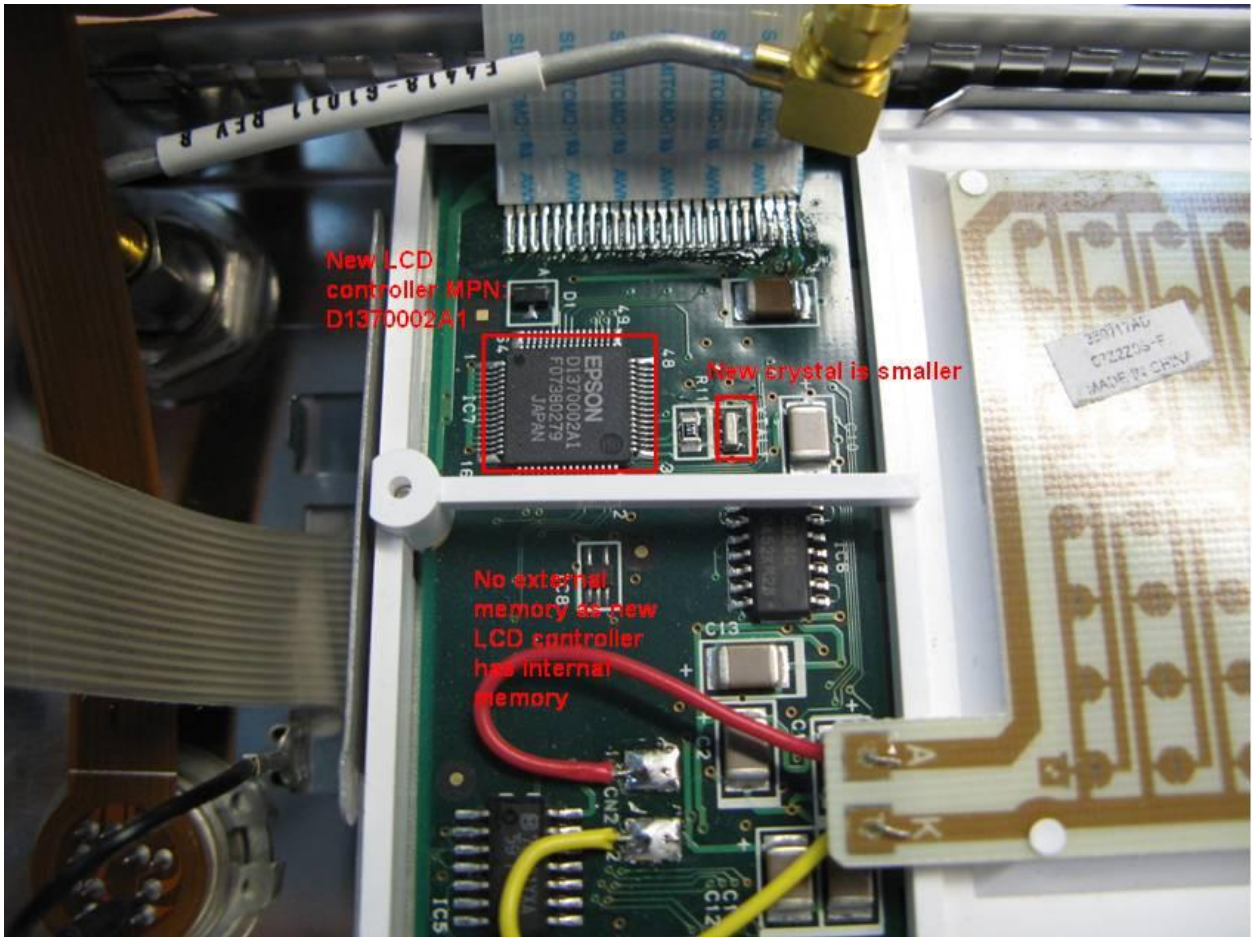
Front Panel Assembly (for standard option, option 002 and option 003)

The new front panel assembly can be differentiated through some components as illustrated below.



Old Front Panel Assembly





New Front Panel Assembly