

# E5052A-04

# S E R V I C E N O T E

Supersedes:  
NONE

## E5052A Signal Source Analyzer

Serial Numbers: MY44100053 / MY44200703, SG44100101/SG44100102

**When replacing A3 with firmware 2.0 or below, the E5052A does not boot up.**

**To Be Performed By: Agilent-Qualified Personnel**

**Parts Required:**

P/N	Description	Qty.
E5052-62003	A3 ADC/DSP BOARD ASSEMBLY	1
or		
E5052-69003	RSTRD E5052-62003 ADC/DSP	1

## ADMINISTRATIVE INFORMATION

SERVICE NOTE CLASSIFICATION:

**INFORMATION ONLY**

AUTHOR: jm      PRODUCT LINE: WN

ADDITIONAL INFORMATION:

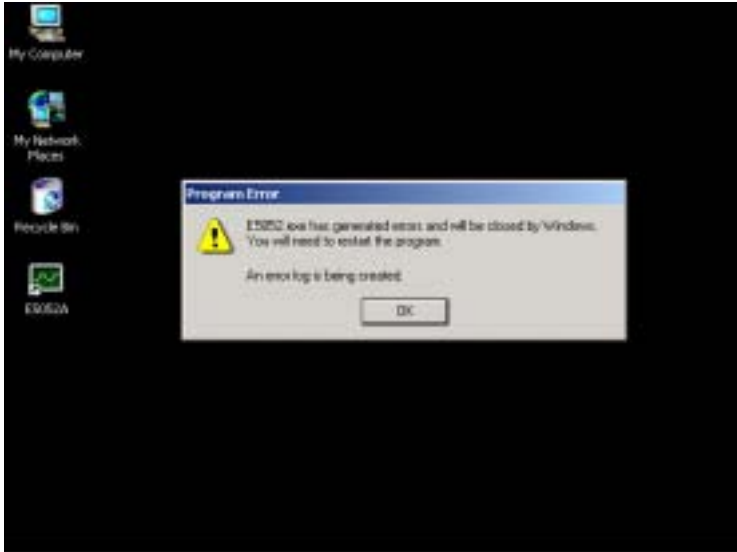
© AGILENT TECHNOLOGIES, INC. 2007  
PRINTED IN U.S.A.



January 30, 2007

**Situation:**

When replacing the A3 board with firmware 2.0 or below, you might see the following error message and the E5052A can not boot up successfully.

**Solution/Action:**

- (1) Ask customer whether they accept the Firmware update to 2.5 or later.

**Note:** There is a difference between the measurement result with FW2.0/below and the one with FW2.5/later, because signal under test is largely distorted or is square wave. The measurement result is more accurate with FW2.5 or later, though.

- (2-1) If the customer accepts the firmware update, update firmware to 2.5 or later. This boot failure will be solved.
- (2-2) In case customer does not accept the Firmware Update to 2.5, since the customer concerns the lack of measurement consecutiveness. Then contact to KID,SVC-SUPPORT (A-Japan,exgen1) with Title "SN E5052A-04 FW issue".  
CTD-Kobe will provide the revised firmware for FW2.0.

- End of Document -