

MODIFICATION RECOMMENDED –  
CORRECTS MANUFACTURING OR DESIGN DEFECTS

**N6776A-01**

**S E R V I C E N O T E**

Supersedes:  
NONE

**N6776A 300W DC Power Module**

Serial Numbers: MY4300000000/MY43000156

**Current Measurement accuracy is out of specification when there is voltage being sourced at the output terminals.**

**To Be Performed By: Agilent qualified personnel**

**Parts Required:**

P/N	Description	Qty.
0160-7809	0.015 uf capacitor	2

**ADMINISTRATIVE INFORMATION**

SERVICE NOTE CLASSIFICATION:					
<b>MODIFICATION RECOMMENDED</b>					
ACTION CATEGORY:	<input type="checkbox"/> IMMEDIATELY x ON SPECIFIED FAILURE  <input type="checkbox"/> AGREEABLE TIME	STANDARDS:	LABOR: 0.75 Hours		
LOCATION CATEGORY:	<input type="checkbox"/> CUSTOMER INSTALLABLE <input type="checkbox"/> ON-SITE x SERVICE CENTER	SERVICE INVENTORY:	<input type="checkbox"/> RETURN <input type="checkbox"/> SCRAP <input type="checkbox"/> SEE TEXT	USED PARTS:	<input type="checkbox"/> RETURN x SCRAP <input type="checkbox"/> SEE TEXT
AVAILABILITY:	PRODUCT'S SUPPORT LIFE	AGILENT RESPONSIBLE UNTIL: obsolescence			
AUTHOR: MC	PRODUCT LINE: SP				
ADDITIONAL INFORMATION:					

© AGILENT TECHNOLOGIES, INC. 2006  
PRINTED IN U.S.A.



November 17, 2006

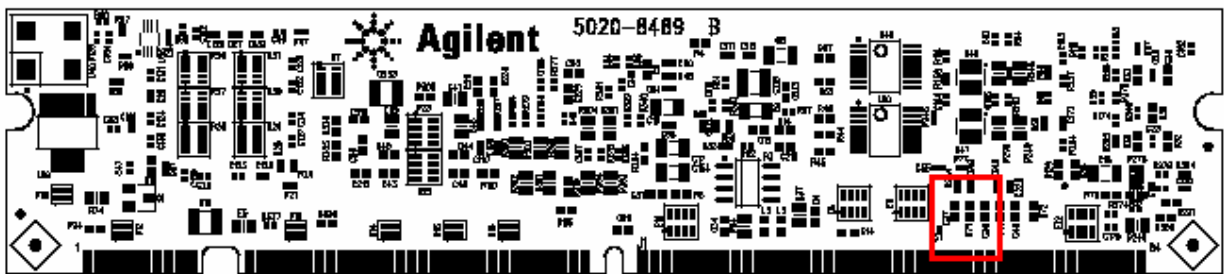
**Situation:**

Due to some noise filtering issues, the current measurement accuracy will be out of specification by a fixed offset when there is a voltage being sourced at the output terminals. If the output is shorted, the current measurement accuracy will be within specifications. Please note that the performance verification test will not catch this.

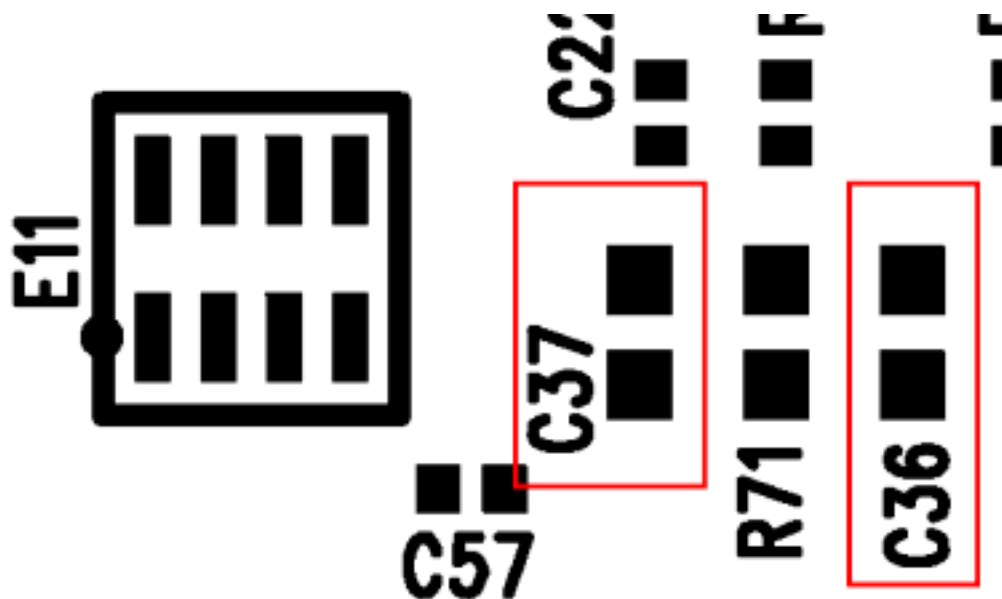
**Solution/Action:**

Test to see if the module is out of specification by applying 75% of full scale voltage while drawing 50 to 70 mA . Compare the reading to what it should be via the current measurement accuracy spec. If the current measurement is within specification then the capacitors will not need to be changed.

If this measurement is out of specification, replace capacitors C36 and C37 on the DPM assembly (this is the assembly that is vertically mounted in the unit that looks similar to a PC memory module) with part number 0160-7809. After the capacitors are changed, the unit will require re-calibration. After the capacitors are replaced, check the make sure that the unit is in specification by applying 75% of the full voltage range while attached to a load drawing 50 mA to 70 mA. If the current measurement is within the specification, then the unit has been repaired.

**Pictures:**

Location of C36 and C37



Detail