

MODIFICATION AVAILABLE – PERFORMANCE ENHANCEMENT  
CHARGEABLE TO CUSTOMER SERVICE / RELIABILITY  
ENHANCEMENT CHARGEABLE TO CONTRACT IF THERE IS ONE.

**N8975A-02**

# S E R V I C E N O T E

Supersedes:  
NONE

## N8975A NFA Series Noise Figure Analyzer

Serial Numbers: [0000A00000 / 9999Z99999]

**Connector A3J10 does not have suitable locking mechanism**

**To Be Performed By: Agilent-Qualified Personnel or Customer**

**Parts Required:**

P/N	Description	Qty.
NONE		

## ADMINISTRATIVE INFORMATION

SERVICE NOTE CLASSIFICATION:		
<b>MODIFICATION AVAILABLE</b>		
ACTION CATEGORY:	AGREEABLE TIME	<input type="checkbox"/> PERFORMANCE ENHANCEMENT <input checked="" type="checkbox"/> SERVICE / RELIABILITY ENHANCEMENT
LOCATION CATEGORY:	<input type="checkbox"/> CUSTOMER INSTALLABLE <input type="checkbox"/> ON-SITE <input checked="" type="checkbox"/> SERVICE CENTER	AVAILABLE UNTIL:
AUTHOR: DM    PRODUCT LINE: PN		
ADDITIONAL INFORMATION:		

© AGILENT TECHNOLOGIES, INC. 2004  
PRINTED IN U.S.A.



April 14, 2004

**Situation:**

Connector J10 on the A3 Microwave Front End Assembly (N8974-61001) does not have a suitable locking mechanism. An investigation has shown that it is possible during transit, or other forms of vibration, that this connector can work loose then make and break intermittently, causing Alignment and self test errors. This connector controls the microwave switch that routes the input signal to the A3 Microwave Front End Assembly (for frequencies above 3 GHz), or the A2 RF Front End Assembly (10MHz – 3 GHz)..

**Solution/Action:**

Add RTV, or some other form of suitable adhesive, across the join in the connector to hold it in place.

This modification should be carried out when the instrument is being repaired or calibrated. A product recall is unnecessary.

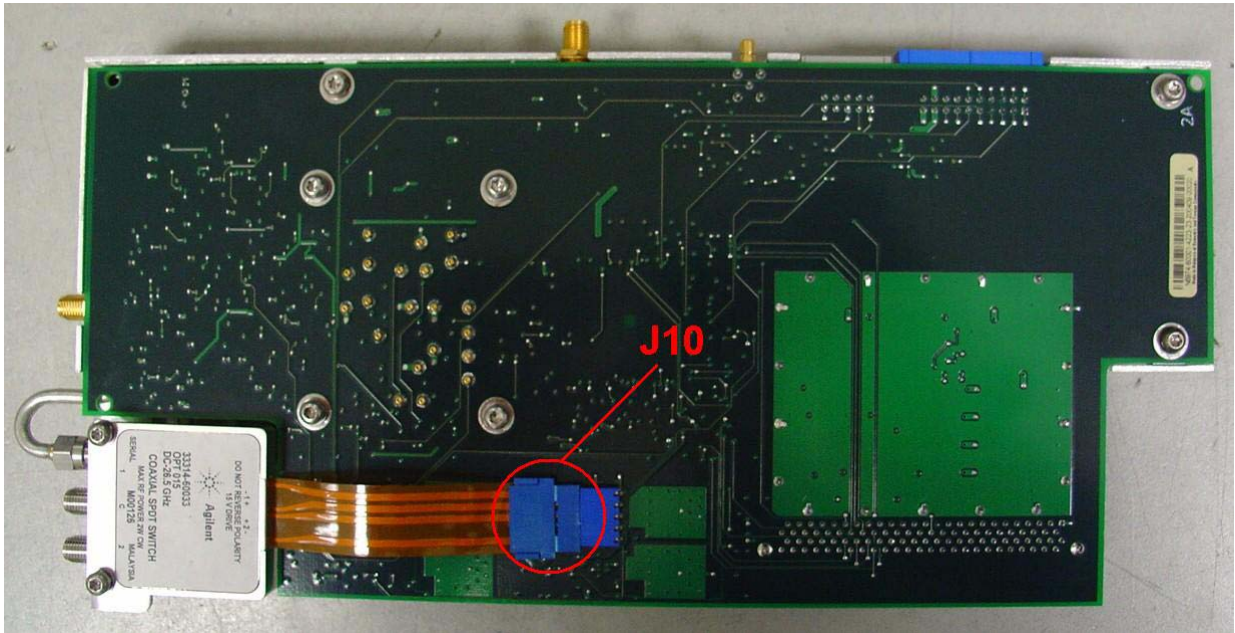


Fig 1 - A3 Assembly Showing Location of Connector J10

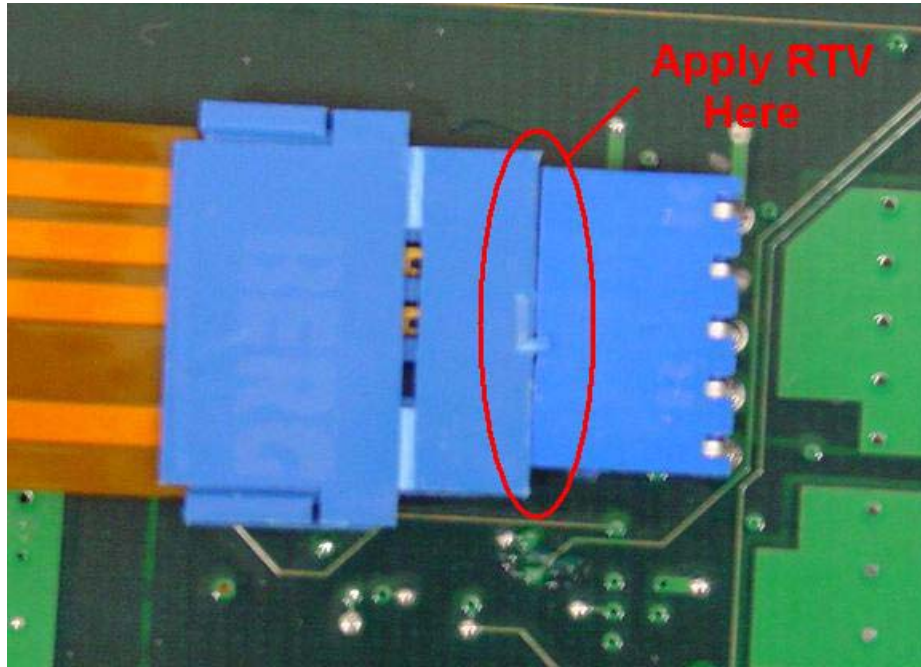


Fig 2 - Connector J10 showing location for Addition of RTV

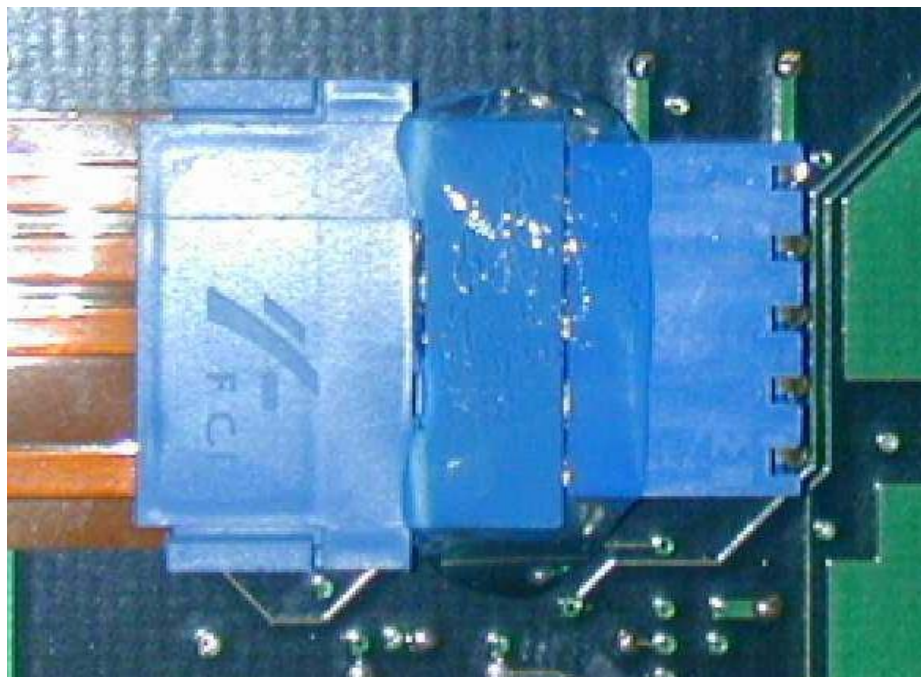


Fig 3 – Connector J10 with RTV added