

RF DEPT.

FILE COPY

SERVICE NOTE

T-910-116

- ☐ - NN - Vic Howard
- ☐ - HA - Bill Adams
- ☐ - RMC - Al Toth
- ☒ - AC - Gordon Kennett
- ☐ - SS - Roger Kettune
- ☐ - YA - George Hopkin
- ☐ - IR - Pete Pizzino
- ☐ - JDR - Bob Harmon
- ☐ - EL - Harrison Chandon

DO NOT REMOVE

REPLACEMENT OF LOW VOLTAGE AND HEATER TRANSFORMER
IN HEWLETT-PACKARD INSTRUMENTS:

SHF SIGNAL GENERATOR MODEL 618B (Serial No. 209 and below)
SHF SIGNAL GENERATOR MODEL 620A (Serial No. 69 and below)

Instruments with the serial numbers given above have an -hp- Stock No. 910-90 power transformer for T301 in the low voltage and heater supply.

This transformer has been superseded by -hp- Stock No. 910-116 power transformer. The new 910-116 transformer requires the same mounting hole as the 910-90 and has the same electrical specifications with the exception of a dual primary winding on the 910-116 transformer. This permits connections to be made for operation from either 115 volts or 230 volts.

The terminal lug and numbering arrangements are different for these two transformers. Refer to Fig. 1 for terminal numbering systems.

Transfer the wires from the 910-90 transformer to the corresponding electrical terminal on the 910-116 transformer. Refer to Fig. 2 for a direct comparison by terminal number between the two transformers. The terminal numbers for the 910-116 transformer are enclosed in a circle while those for the 910-90 are not.

The 910-116 dual primary winding must have the two windings connected in parallel for 115 volt operation. This is accomplished by connecting a wire jumper between terminals A1 and A3 and another wire jumper between terminals A2 and A4.

Contact the factory for the necessary instructions to convert internal wiring and the 910-116 transformer connections for 230 volt operation.

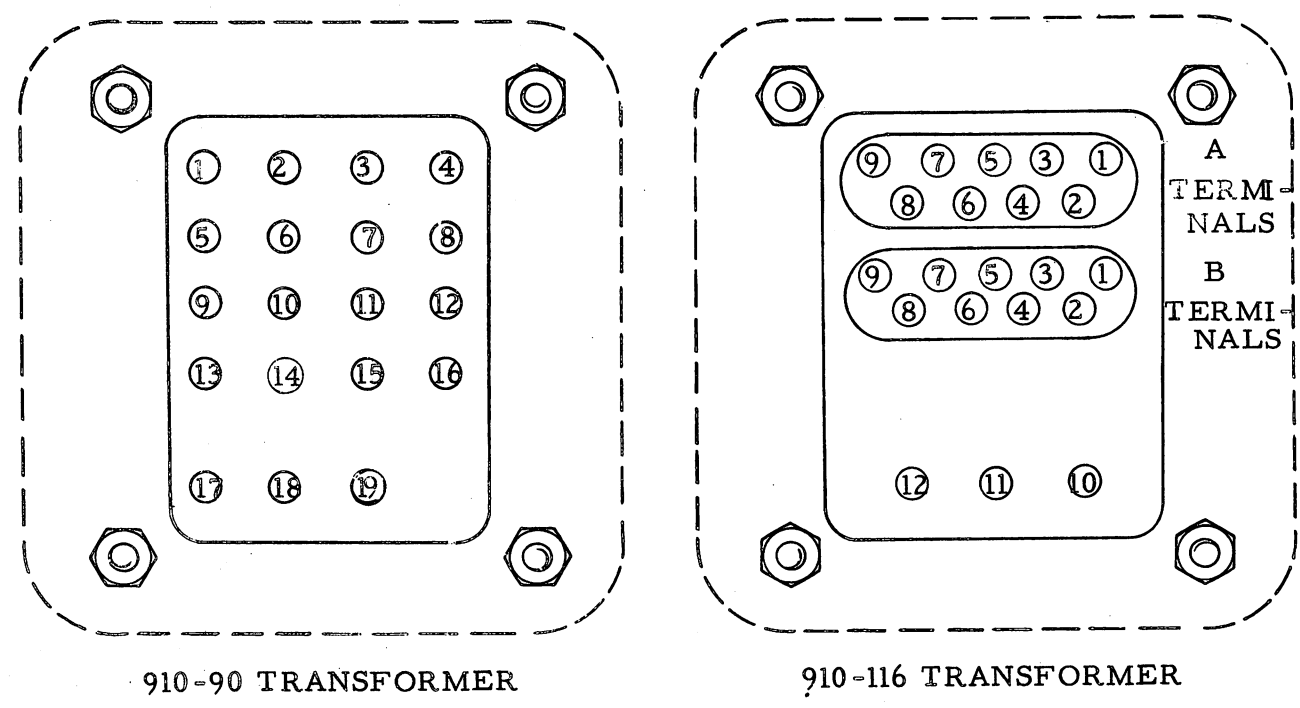


FIG. 1. TERMINAL NUMBERING FOR 910-90 & 910-116 TRANSFORMERS

(OVER)

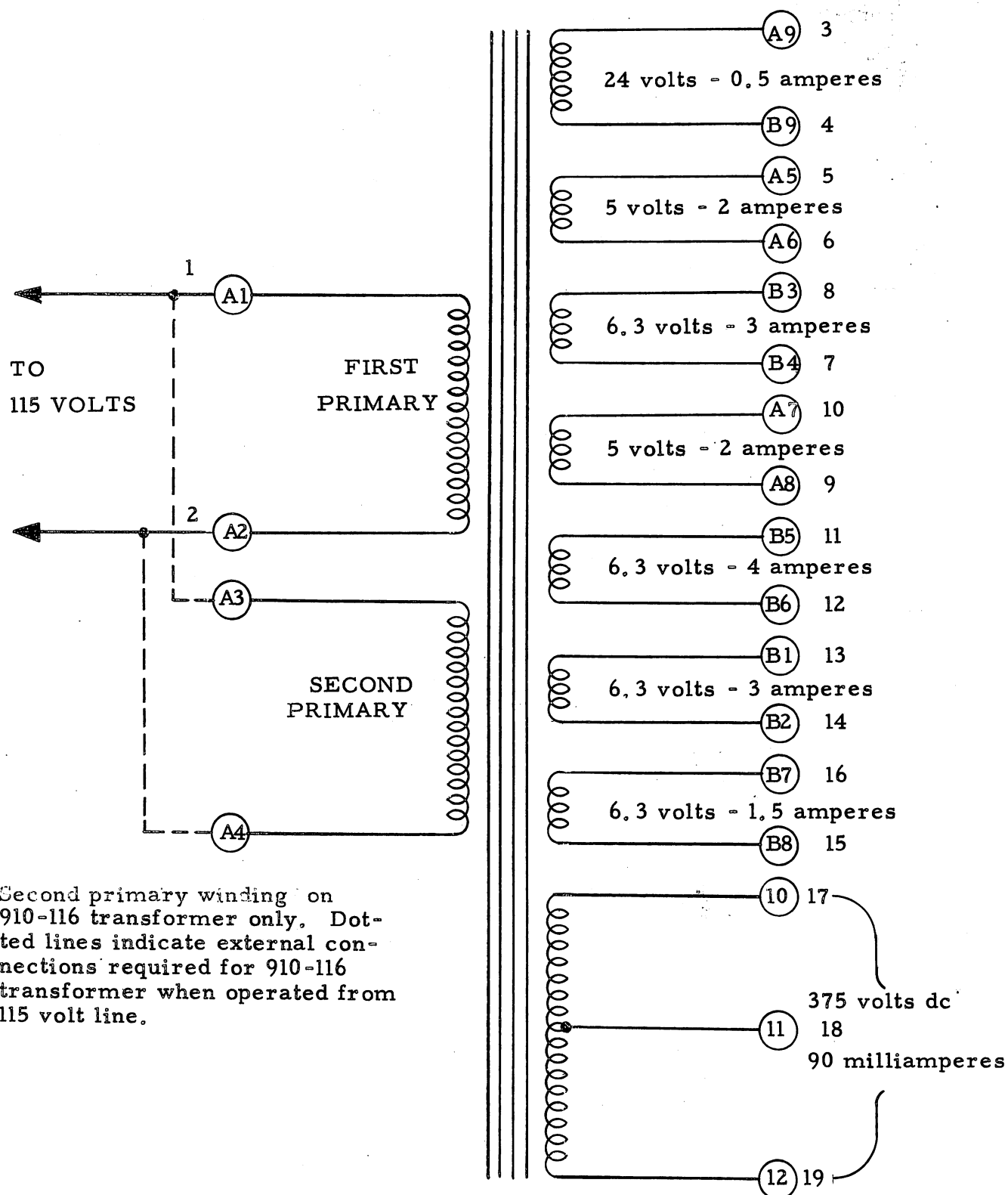


FIG. 2. TERMINAL CONNECTIONS FOR 910-90 & 910-116 TRANSFORMERS. Numbers in circles are for 910-116 while numbers beside circles are for 910-90 transformers.