

U9405A-01

S E R V I C E N O T E

Supersedes:
None

U9405A i1000 Small Foot Print Inline

Serial Numbers:

TW53160001- TW53160003, TW53160006, TW49110189

Change in Fixture position sensor and brackets to prevent cable damages.

Parts Required:

Replacement parts to be ordered directly from factory.

Contact :

kwan-wee_lee@agilent.com

derek-cw_yu@agilent.com

ADMINISTRATIVE INFORMATION

SERVICE NOTE CLASSIFICATION:		
MODIFICATION RECOMMENDED		
ACTION <input type="checkbox"/> ON SPECIFIED FAILURE CATEGORY: X AGREEABLE TIME	STANDARDS	LABOR: 0.5 Hours
LOCATION <input type="checkbox"/> CUSTOMER INSTALLABLE CATEGORY: X ON-SITE (active On-site contract required) <input type="checkbox"/> SERVICE CENTER <input type="checkbox"/> CHANNEL PARTNER	SERVICE <input type="checkbox"/> RETURN INVENTORY: <input type="checkbox"/> SCRAP <input type="checkbox"/> SEE TEXT	USED <input type="checkbox"/> RETURN PARTS: x SCRAP <input type="checkbox"/> SEE TEXT
AVAILABILITY: PRODUCT'S SUPPORT LIFE	NO CHARGE AVAILABLE UNTIL: 21-Feb-2016	
<input type="checkbox"/> Calibration Required X Calibration NOT Required	PRODUCT LINE: 80 AUTHOR: KW Lee	
ADDITIONAL INFORMATION: Order parts directly from factory. Contact kwan-wee_lee@agilent.com or derek-cw_yu@agilent.com		

© AGILENT TECHNOLOGIES, INC. 2014
PRINTED IN U.S.A.

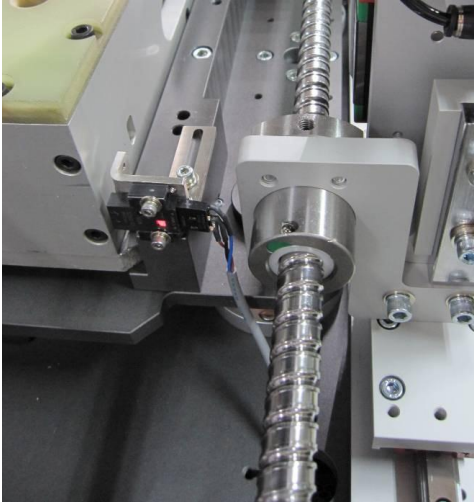
February 21, 2014

Rev. 21



Situation:

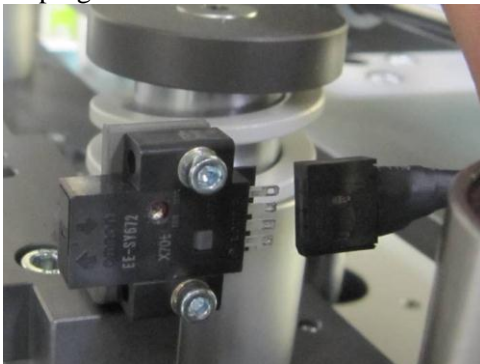
The Fixture position sensor is mounted at the back of the SFP to detect the fixture when it is inserted. The wires from the sensor are currently very close to the Conveyor width adjustment shaft. As such, it presents a potential risk for damage to occur.

**Solution/Action:**

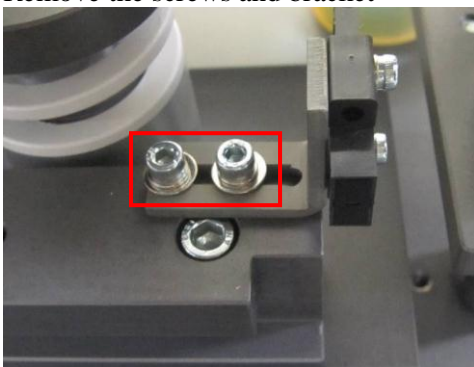
The change is to replace the existing sensor and the metal bracket with a new sensor and new bracket.

Steps of replacement are listed below.

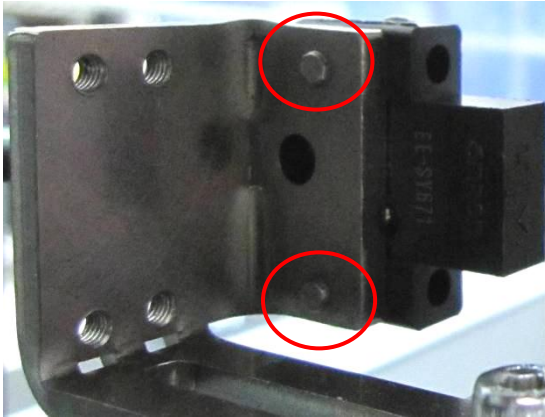
1. Unplug the cable from the sensor.



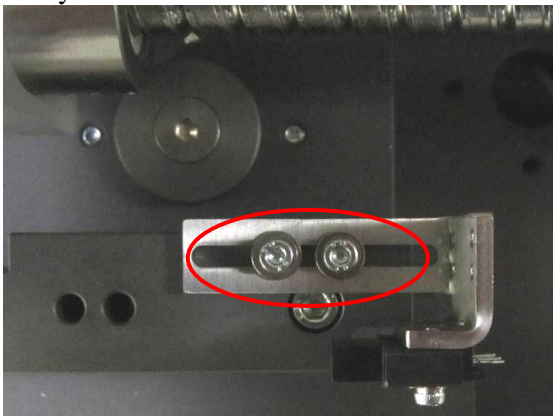
2. Remove the screws and bracket



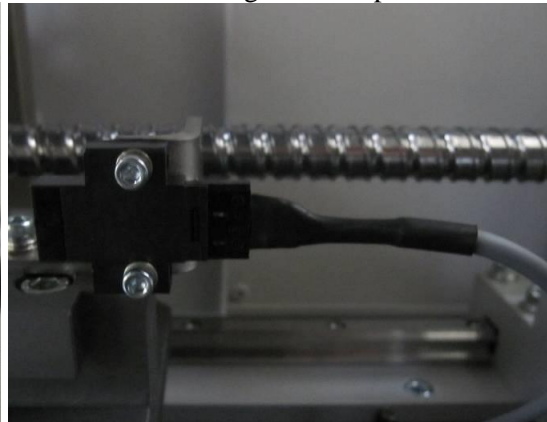
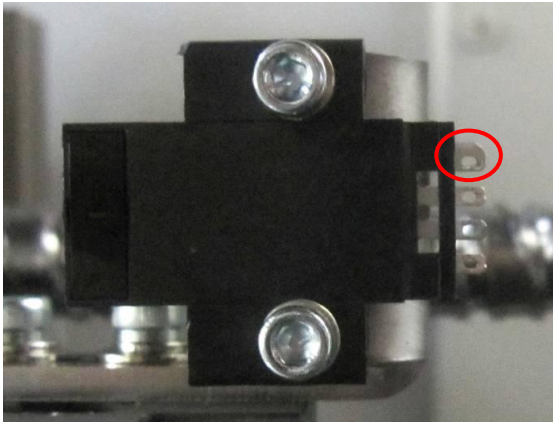
- Secure the new sensor to the new bracket.



- Install the new bracket back to the system. The sensor should now be pointing towards the front of the system.



- Insert the cable back to the sensor. Take note on the orientation using the wide pin as reference.



Revision History:

Revision Number	Date	Author	Reason For Change
1.0	20 Feb 2014	KW Lee	As published